



PRODUCT CATALOG

DSCN 700

HVAC SPECIALTIES

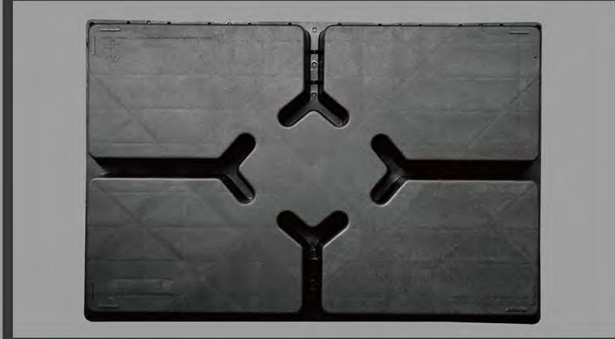
HARDI
PROUD MEMBER



DAKOTA
THE DIRECT SOURCE!

2024 CATALOG

DSCN 700



HARDI
PROUD MEMBER



www.dakotasourcing.com



STANDARD TERMS & CONDITIONS

GENERAL POLICIES: All items not ordered in multiples of standard package quantities, will automatically be increased to the next standard package quantity. Purchase orders submitted by our customers imply accepting our general terms, conditions and prices as stated, any conflicting terms, conditions or prices stated on the purchase order cannot supersede our terms.

IF IT IS YOUR POLICY TO ISSUE A CONFIRMING PURCHASE ORDER FOLLOWING PHONE ORDERS, BE CERTAIN THE ORDER IS CLEARLY MARKED AS CONFIRMING.

We reserve the right to make changes in design, packaging, material or finish in an effort to improve our products without special notification.

DAKOTA SOURCING, LLC has made a diligent effort to illustrate and describe the products in the catalog and website accurately; however, such illustrations and descriptions are for the sole purpose of identification, and do not express or imply a warranty that the products are merchantable, or fit for a particular purpose. DAKOTA SOURCING, LLC assumes no liability for typographical or photographic errors.

Many states and localities have codes and regulations governing sales, construction, installation and/ or use of products for certain purposes, which may vary from those in neighboring areas. Before purchase and use of a product, please review the product application, federal and local codes and regulations, and be certain the product, installation and use will be in compliance with any applicable codes and regulations.

PAYMENT TERMS: Net 30 days. Late charges of 1-1/2% per month will be charged every 30 days following the due date. Prices subject to change without notice. DAKOTA SOURCING, LLC does accept credit cards for payment on account, but does reserve the right to decline such acceptance of payment. A credit card fee, of 3%, will be added to all payments using credit cards.

FREIGHT POLICY: Orders totaling \$1,000 in the continental United States and orders totaling \$2,500 or more in Canada are full freight allowed. For copper fitting orders, FFA is \$750. Extra charges, such as scheduled delivery appointments, redelivery fees, lift gate charges, etc. are not included in FFA shipments. Any additional special charges to DAKOTA SOURCING, LLC will be charged back to customer. All orders less than FFA, shipping and handling will be prepaid and added to your invoice. A charge of \$10.00 will be added to all expedited shipments. A charge of \$25.00 will be added to all non-standard carrier pickups. An Export Documentation Fee of \$15 will be added to all orders shipping outside of the U.S.

MINIMUM ORDER: \$50.00 minimum order on all original orders.

PRICING: Quotes are valid for 30 days unless noted otherwise on the quote. Once a quote is accepted and an order is placed, the quoted price is valid for 3 months. At which time, costs are evaluated and pricing may change.

BACK ORDERED ITEMS: When an item is unavailable back orders are generated.

LOST OR DAMAGED POLICY: Although we take special care to ensure the safe arrival of your merchandise, our responsibility for damages ceases when the customer accepts the shipment. To protect your interests, we suggest that you thoroughly inspect all items before accepting delivery. Please take pictures of the damage or shortage to help the claim process. If your order was damaged in shipment or contains a shortage, report the loss or damage within one business day from the date of delivery to DAKOTA SOURCING, LLC. Any claims for lost or damaged freight must be noted on the Bill of Lading and photos taken at the time of delivery is required to receive replacement inventory and/or credit. If damage is present, you must hold the original carton and merchandise for credit by your Sales Representative – otherwise, no claim can be honored.

ORDER DISCREPANCIES: All order discrepancies must be reported to us within one business day from the date of the delivery. Any discrepancies reported after this period cannot be honored.

RETURNS: No merchandise will be accepted for return without prior written authorization. Call our Customer Service Department to request permission to return goods. Instructions on method of return will be given to you at that time. No credit will be allowed for material determined to be over 1 year old, of obsolete or old design, in unsalable condition or not in standard quantities. All returns are subject to a restocking, repackaging, and return charge.

Dakota Sourcing reserves the right to change the policy at any time, with or without notice.

TABLE OF CONTENTS

EQUIPMENT PADS

DAKOTA E-Z STACK PAD	1
BLOW PLASTIC PADS	2

MOUNTING SUPPLIES

MINI SPLIT A/C PUMP STANDS	3
MINI SPLIT BRACKET	4
WALL MOUNT A/C BRACKETS	4
ONE PIECE PUMP STANDS	5
TWO PIECE PUMP STANDS	5
ADJUSTABLE CONDENSER RISERS	5
HIGH PERFORMANCE PADS	6
CORK/RUBBER PADS	6
ALL RUBBER PADS	6
WAFFLE SQUARE EQUIPMENT PADS	7
FURNACE MOUNTING BLOCK	7

DRAIN PANS

PLASTIC CONDENSATE DRAIN PANS	8
-------------------------------	---

CAULKING & SEALANTS

SILICONE SEALANTS	9
CAULKING GUNS	9
WATER BASED DUCT SEALANT	9
EXPANDING FOAM	9

STRAPS

P.P. WEBBING HANGER STRAPS	10
NYLON DUCT STRAPS	10
TENSIONING TOOL	10

CONDENSATE

CONDENSATE REMOVAL PUMP	10
-------------------------	----

VENTILATION PRODUCTS

CONCENTRIC VENT KIT	11
HORIZONTAL VENT TERMINATION KIT	12
RAIN CAP FOR CONCENTRIC VENT KIT	12
WYE TEE FOR CONCENTRIC VENT KIT	12
SCREEN FOR CONCENTRIC VENT KIT	12
VERSA CAP MULTI LAYERS VENT CAPS	12
PLASTIC BATHROOM/KITCHEN VENTING HOOD	13
PLASTIC INTAKE LOUVER VENTS	14
PLASTIC PREFERRED HOOD	14

VENTING DUCT

VINYL DUCT	15
SEMI-RIGID DUCT	15
DAKOTA™ ALUMINUM FOIL DUCT	15

GAS VALVES

16

DWV PIPE & FITTINGS

16

PVC PIPE & FITTINGS

17

COPPER TUBING

20

COPPER FITTINGS

20

BLACK FITTINGS

21

DRIP LEG KIT

22

BLACK STEEL PIPE &

NIPPLES

23

CONDUIT & FITTINGS

N/M FITTINGS CONDUIT WHIPS	24
M FITTINGS CONDUIT WHIPS	24
NON-METALLIC LIQUID TIGHT CONDUIT	24

DISCONNECT SWITCHES

METAL DISCONNECT SWITCHES	25
PLASTIC DISCONNECT SWITCHES	25

POWER CORDS

REPLACEMENT POWER CORDS	25
-------------------------	----

CONTACTORS

DEFINITE PURPOSE CONTACTORS	26
-----------------------------	----

ELECTRICAL WIRE

CLASS 2 THERMOSTAT WIRE	27
-------------------------	----

PROFESSIONAL TOOLS

SELF LIGHTING TORCH	27
---------------------	----

MISCELLANEOUS

SPRAY PAINTS	27
--------------	----

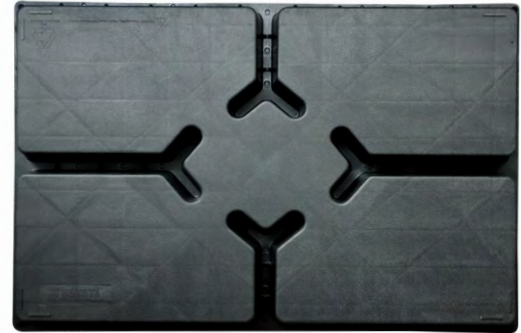
EQUIPMENT PADS

DAKOTA E-Z STACK PAD

NEW DESIGN

- The excellent one-piece structure design makes the bottom surface have more contact with the ground, making the product not easy to sink.
- Sturdy stiffener rib design enables the product to have better load-bearing performance.
- Nestable design reduces storage space and transportation costs.
- The special texture on the surface makes the product have a non-slip effect.
- Hole-free design prevents the equipment from operating normally due to weeds growing upwards.

Item No.	Specifications	U/M	Std. Pkg.
18042S	24"X24"X3" E-Z STACK EQUIPMENT PAD, GRAY	EA	70
18042SP	24"X24"X3" E-Z STACK EQUIPMENT PAD, GRAY, 70 PACK	PK	1
18042BS	24"X24"X3" E-Z STACK EQUIPMENT PAD, BLACK	EA	70
18042BSP	24"X24"X3" E-Z STACK EQUIPMENT PAD, BLACK, 70 PACK	PK	1
18044S	30"X30"X3" E-Z STACK EQUIPMENT PAD, GRAY	EA	60
18044SP	30"X30"X3" E-Z STACK EQUIPMENT PAD, GRAY, 60 PACK	PK	1
18044BS	30"X30"X3" E-Z STACK EQUIPMENT PAD, BLACK	EA	60
18044BSP	30"X30"X3" E-Z STACK EQUIPMENT PAD, BLACK, 60 PACK	PK	1
18046S	32"X32"X3" E-Z STACK EQUIPMENT PAD, GRAY	EA	54
18046SP	32"X32"X3" E-Z STACK EQUIPMENT PAD, GRAY, 54 PACK	PK	1
18046BS	32"X32"X3" E-Z STACK EQUIPMENT PAD, BLACK	EA	54
18046BSP	32"X32"X3" E-Z STACK EQUIPMENT PAD, BLACK, 54 PACK	PK	1
18048S	36"X36"X3" E-Z STACK EQUIPMENT PAD, GRAY	EA	43
18048SP	36"X36"X3" E-Z STACK EQUIPMENT PAD, GRAY, 43 PACK	PK	1
18048BS	36"X36"X3" E-Z STACK EQUIPMENT PAD, BLACK	EA	43
18048BSP	36"X36"X3" E-Z STACK EQUIPMENT PAD, BLACK, 43 PACK	PK	1
18049S	40"X40"X3" E-Z STACK EQUIPMENT PAD, GRAY	EA	42
18049SP	40"X40"X3" E-Z STACK EQUIPMENT PAD, GRAY, 42 PACK	PK	1
18049BS	40"X40"X3" E-Z STACK EQUIPMENT PAD, BLACK	EA	42
18049BSP	40"X40"X3" E-Z STACK EQUIPMENT PAD, BLACK, 42 PACK	PK	1
18050S	18"X38"X3" E-Z STACK EQUIPMENT PAD, GRAY	EA	90
18050SP	18"X38"X3" E-Z STACK EQUIPMENT PAD, GRAY, 90 PACK	PK	1
18050BS	18"X38"X3" E-Z STACK EQUIPMENT PAD, BLACK	EA	90
18050BSP	18"X38"X3" E-Z STACK EQUIPMENT PAD, BLACK, 90 PACK	PK	1
18052S	24"X36"X3" E-Z STACK EQUIPMENT PAD, GRAY	EA	76
18052SP	24"X36"X3" E-Z STACK EQUIPMENT PAD, GRAY, 76/PK	PK	1
18052BS	24"X36"X3" E-Z STACK EQUIPMENT PAD, BLACK	EA	76
18052BSP	24"X36"X3" E-Z STACK EQUIPMENT PAD, BLACK, 76/PK	PK	1
18070S	24"X48"X3" E-Z STACK EQUIPMENT PAD, GRAY	EA	50
18070SP	24"X48"X3" E-Z STACK EQUIPMENT PAD, GRAY, 50 PACK	PK	1
18070BS	24"X48"X3" E-Z STACK EQUIPMENT PAD, BLACK	EA	50
18070BSP	24"X48"X3" E-Z STACK EQUIPMENT PAD, BLACK, 50 PACK	PK	1
18072S	36"X48"X3" E-Z STACK EQUIPMENT PAD, GRAY	EA	38
18072SP	36"X48"X3" E-Z STACK EQUIPMENT PAD, GRAY, 38/PK	PK	1
18072BS	36"X48"X3" E-Z STACK EQUIPMENT PAD, BLACK	EA	38
18072BSP	36"X48"X3" E-Z STACK EQUIPMENT PAD, BLACK, 38/PK	PK	1



PATENT PENDING

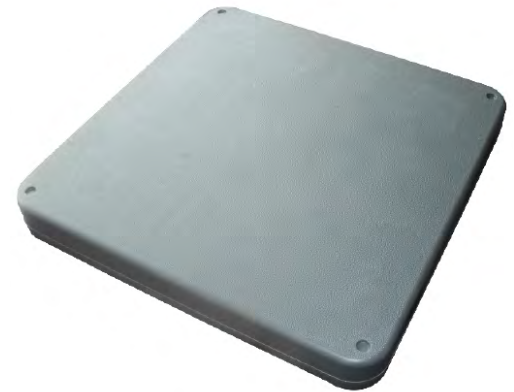


EQUIPMENT PADS

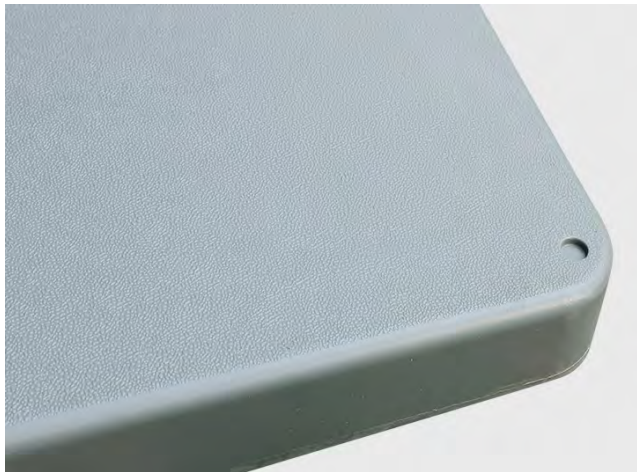
BLOW PLASTIC EQUIPMENT PADS

- Lightweight, durable, and exceptionally strong.
- Textured top surface to reduce slippage.
- Concrete gray color / black color.
- Unaffected by uv exposure or extreme weather.

Item No.	Specifications	U/M	td. Pkg.
18041	24" x 24" x 2" Gray Plastic Blow Pad	EA	40
18041B	24" x 24" x 2" Black Plastic Blow Pad	EA	40
18043	30" x 30" x 2" Gray Plastic Blow Pad	EA	28
18043B	30" x 30" x 2" Black Plastic Blow Pad	EA	28
18045	32" x 32" x 2" Gray Plastic Blow Pad	EA	26
18045B	32" x 32" x 2" Black Plastic Blow Pad	EA	26
18047	36" x 36" x 2" Gray Plastic Blow Pad	EA	25
18047B	36" x 36" x 2" Black Plastic Blow Pad	EA	25



B= Black color
Private label upon request



MOUNTING SUPPLIES

MINI SPLIT A/C PUMP STANDS **NEW**

- Constructed from high-performance steel with a weather-resistant coating for durable protection.
- Elevates the A/C unit to avoid direct contact with the ground.
- Anti-corrosion design protecting the A/C unit from rust and moisture damage.
- Allows the slider to be adjusted according to the size of the A/C unit, and built-in measurement helps to directly confirm the length when adjusting.
- Anti-Vibration units can reduce noise and prevent unnecessary movement.
- Easily installable on flat surfaces, compatible with major mini split A/Cs and heat pumps, adhering to industrial code.
- Compact size, saving storage space and transportation costs.



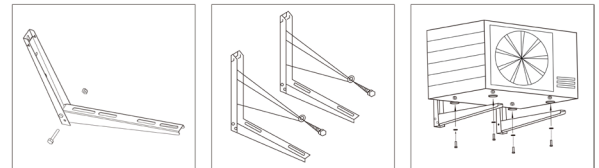
Item No.	Specifications	U/M	Std. Pkg.
18701	L35 1/2" X W18" X H12"	KT	4
18702	L35 1/2" X W22" X H12"	KT	4
18703	L35 1/2" X W18" X H18"	KT	4
18704	L35 1/2" X W22" X H18"	KT	4



MOUNTING SUPPLIES

MINI SPLIT BRACKET (TYPE 1)

- Heavy duty steel construction galvanized and electrostatic paints for resistance scratch and corrosion. Galvanized steel plus epoxy-coated finishing, allowing the bracket to endure all climate condition.
- Heavy duty design with L-bracket and horizontal coated with fold-able design. Includes all necessary hardware.
- Use for loading split type air conditioner of outdoor unit. Raises the outdoor unit above floor level protecting it from dirt, snow, debris, flood, corrosion and other perils.
- Easy 2-ways mounting-hard-wares included for your convenience, vibration isolation pads are provided for noise and vibration control purpose.
- Minimizes the chance of damage to the window or outside wall.



Item No.	Specifications	U/M	Std. Pkg.
18023	16-1/2" x 21-3/4" Bracket (3 HP)	PR	10

MINI SPLIT BRACKET (TYPE 2)

- Heavy duty design with L-bracket and horizontal. Accurate construction-advanced technical to ensure brackets are perpendicular to each other when condenser leveling.
- Heavy duty bracket-constructed with heavy duty steel plate, ribbed design to provided extra strength, light weight and sturdy. Equipped with cross bar for stability.
- Includes bubble level and adjustable back support.
- Quick and easy installation, all necessary hardware included.
- Use for supporting condensing units.



Item No.	Specifications	U/M	Std. Pkg.
18024	31" x 15" x 17-3/4" Bracket (2 HP)	PR	6
18025	31-1/2" x 15" x 21-1/2" Bracket (3 HP)	PR	6

WALL MOUNT A/C BRACKETS

- Use for A/C condensers and heat pumps.
- Can be mounted at any height.
- Strong and durable, not easily affected by bad weather.
- Advanced technique to ensure brackets are perpendicular to each other when condenser leveling.
- Reliable rubber vibration for shock absorption and correct distance from the wall for air flow.

Item No.	Specifications	U/M	Std. Pkg.
18026	30" A/C Bracket (Powder Coated)	PR	48
18027	36" A/C Bracket (Powder Coated)	PR	48
18028	42" A/C Bracket (Powder Coated)	PR	48
18029	48" A/C Bracket (Powder Coated)	PR	48

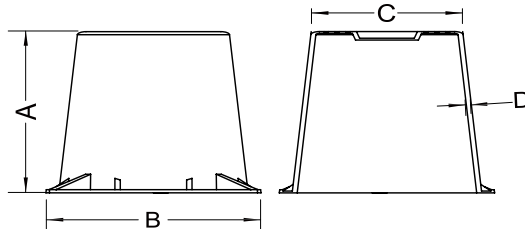
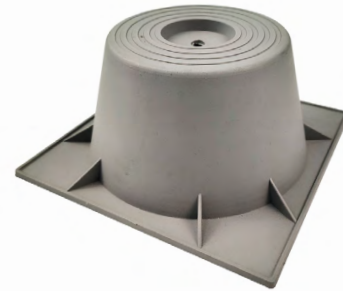


MOUNTING SUPPLIES

ONE PIECE CONDENSER RISERS

- Sturdy & Stable.
- Used to elevate the system from the potential threat of rain or snow.
- Extends the life of your condenser or heat pump by allowing the base of the unit to stay dry.
- Butyl mastic on the top and bottom guarantees no slipping and reduced vibration and noise.
- Provides the desired elevation for condensers, heat pumps, and air handlers.

Item No.	Specifications	A	B	C	D	U/M	Std. Pkg.
18030	3" One-Piece Heat Pump Stand	3.0"	6-1/4"	3-7/8"	3/32"	EA	48
18031	6" One-Piece Heat Pump Stand	6.0"	6-1/4"	3-7/8"	3/32"	EA	36
18040	12" One-Piece Heat Pump Stand	12.0"	6-1/4"	4-1/4"	9/64"	EA	16
18521W	7"X7" Square J-Block, White					EA	12



TWO PIECE CONDENSER RISERS

- Sturdy & Stable.
- Used to elevate the system from the potential threat of rain or snow.
- Extends the life of your condenser or heat pump by allowing the base of the unit to stay dry.
- Butyl mastic on the top and bottom guarantees no slipping and reduced vibration and noise.
- Provides the desired elevation for condensers, heat pumps, and air handlers.

Item No.	Specifications	U/M	Std. Pkg.
18032	3" Gray Two-Piece Heat Pump Stand	EA	4
18033	3" Black Two-Piece Heat Pump Stand	EA	4
18034	6" Gray Two-Piece Heat Pump Stand	EA	4
18035	6" Black Two-Piece Heat Pump Stand	EA	4



ADJUSTABLE CONDENSER RISERS

- Sturdy & Stable.
- A separate top cap allows for raising or lowering the riser even with equipment already on it.
- Adjustable equipment risers easily adjust up or down as needed to secure equipment at the correct height.
- Used to elevate the system from the potential threat of rain or snow.
- Convenient height markings provided for reference.

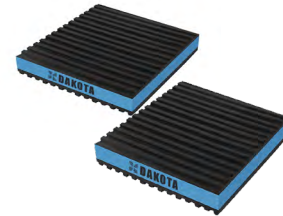
Item No.	Specifications	U/M	Std. Pkg.
18037	6"-7 1/4" Gray Adjustable Pump Riser	EA	4
18038	6"-7 1/4" Black Adjustable Pump Riser	EA	4



MOUNTING SUPPLIES

HIGH PERFORMANCE PADS

- Made of high strength rubber and blue EVA center material, which is structurally more sound than cork, more effective at vibration dampening than solid rubber.
- Not affected by oil or chemicals.
- Designed to withstand the aging and shock absorption of heavy heat pumps, stereo equipment, treadmills, washing machines and dryers, air compressors, etc.
- Rubber is used as a non-slip surface on the top and bottom of the pad, with good tensile strength and elongation characteristics.
- Indoor or outdoor rated up to 60 PSI load.



Item No.	Specifications	U/M	Std. Pkg.
18301	2" x 2" x 7/8" High Performance Pad	EA	100
18302	3" x 3" x 7/8" High Performance Pad	EA	36
18303	4" x 4" x 7/8" High Performance Pad	EA	24
18304	6" x 6" x 7/8" High Performance Pad	EA	12
18305	18" x 18" x 7/8" High Performance Pad	EA	6

CORK/RUBBER PADS

- Rubber pads with cork sheet, made from high quality elastic materials.
- Cork with ribbed pads on either side for added, have excellent vibration-reducing effect.
- Isolation and positive grip, features alternate rib height for additional vibration isolation under both high and low weight loads.
- Compounded for excellent resistance to aging, compression set and oil.
- Dry indoor applications only.



Item No.	Specifications	U/M	Std. Pkg.
18306	2" x 2" x 7/8" Cork Rubber Pad	EA	100
18307	3" x 3" x 7/8" Cork Rubber Pad	EA	36
18308	4" x 4" x 7/8" Cork Rubber Pad	EA	24
18309	6" x 6" x 7/8" Cork Rubber Pad	EA	12
18310	12" x 12" x 7/8" Cork Rubber Pad	EA	12
18311	18" x 18" x 7/8" Cork Rubber Pad	EA	6

ALL RUBBER PADS

- Made from high quality elastomeric materials, compounded for excellent resistance to aging, compression set & oil.
- Solid ribbed design add the isolation and positive grip.
- Have excellent vibration-reducing effect.
- Solid cross-ribbed design.
- Recommended maximum loading capacity: 50 lbs per square in.



Item No.	Specifications	U/M	Std. Pkg.
18312	2" x 2" x 3/8" All Rubber Pad	EA	48
18313	3" x 3" x 3/8" All Rubber Pad	EA	24
18314	4" x 4" x 3/8" All Rubber Pad	EA	24
18315	6" x 6" x 3/8" All Rubber Pad	EA	24
18316	18" x 18" x 3/8" All Rubber Pad	EA	6

MOUNTING SUPPLIES

WAFFLE SQUARES EQUIPMENT PADS

- Designed to reduce problems in industry caused by structure born vibrations and noise very thick and very durable.
- Have excellent vibration-reducing effect.
- All rubber waffle type, not affected by oils and most chemicals.
- Compounded for excellent resistance to aging, compression set and oil.
- Designed for indoor and outdoor applications, can be cut with a multipurpose knife.



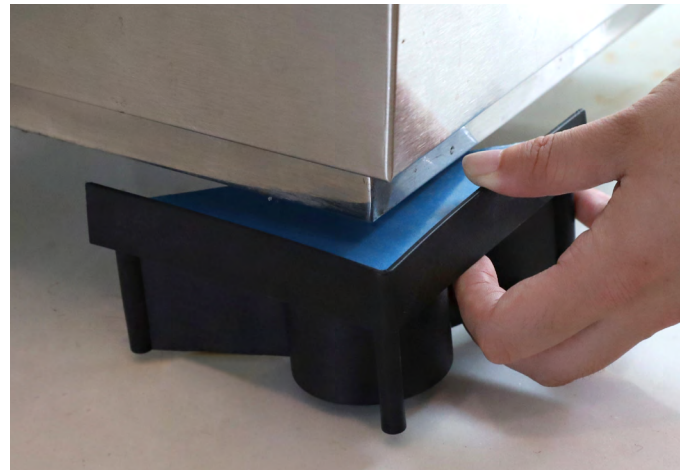
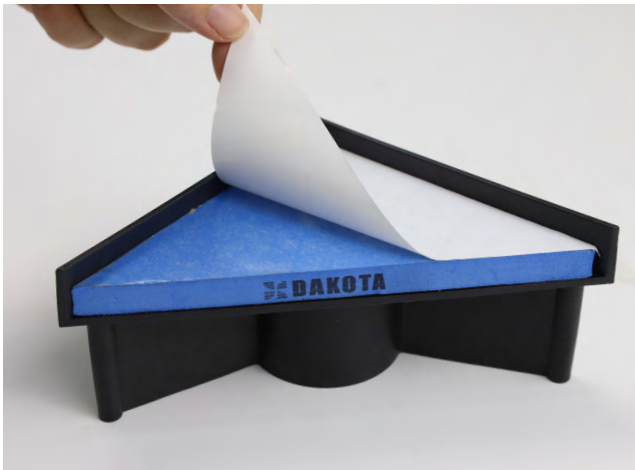
Item No.	Specifications	U/M	Std. Pkg.
18317	2" x 2" x 3/4" Waffle Square Rubber AV Pad	EA	200
18318	4" x 4" x 3/4" Waffle Square Rubber AV Pad	EA	24
18319	18" x 18" x 3/4" Waffle Sqaure Rubber AV Pad	EA	5

FURNACE MOUNTING BLOCK

- The furnace block raises the furnace approximately 2 inches and includes an anti vibration pad to reduce noise and vibration.
- Each furnace block can support over 500 pounds.
Its unique wedge shape and integrated lip around top edge insure quick and accurate placement on each corner of the furnace.
- Easy peel and stick attachment method, not tools needed.



Item No.	Specifications	U/M	Std. Pkg.
18060	Furnace Mounting Block	EA	1



DRAIN PANS

PLASTIC CONDENSATE DRAIN PANS

- Help collect condensate from air conditioners and heating devices.
- The ribs at the bottom of the tray increase strength and heighten the parts, keeping them away from trapped liquid.
- Durable and easy to store.
- No seams, no rust, and no leakage.
- Rolled edges are designed to be easy on the hands.



LS - Drain fitting at Long Side
SS - Drain fitting at Short Side

Item No.	Specifications	U/M	Std. Pkg.
18001	24" x 24" Bottom, 26" x 26" Overall, Drain: S	EA	5
18002	27" x 29" Bottom, 29" x 31" Overall, Drain: LS	EA	5
18003	27" x 29" Bottom, 29" x 31" Overall, Drain: SS	EA	5
18004	27" x 39" Bottom, 29" x 41" Overall, Drain: LS	EA	5
18005	27" x 39" Bottom, 29" x 41" Overall, Drain: SS	EA	5
18006	27" x 48" Bottom, 29" x 50" Overall, Drain: LS	EA	5
18007	27" x 48" Bottom, 29" x 50" Overall, Drain: SS	EA	5
18008	27" x 63" Bottom, 29" x 65" Overall, Drain: LS	EA	5
18009	27" x 63" Bottom, 29" x 65" Overall, Drain: SS	EA	5

Item No.	Specifications	U/M	Std. Pkg.
18010	30" x 30" Bottom, 32" x 32" Overall, Drain: S	EA	5
18011	30" x 50" Bottom, 32" x 52" Overall, Drain: LS	EA	5
18012	30" x 50" Bottom, 32" x 52" Overall, Drain: SS	EA	5
18013	30" x 60" Bottom, 32" x 62" Overall, Drain: LS	EA	5
18014	30" x 60" Bottom, 32" x 62" Overall, Drain: SS	EA	5
18015	32" x 63" Bottom, 34" x 65" Overall, Drain: LS	EA	5
18016	32" x 63" Bottom, 34" x 65" Overall, Drain: SS	EA	5
18017	36" x 36" Bottom, 38" x 38" Overall, Drain: S	EA	5
18018	36" x 60" Bottom, 38" x 62" Overall, Drain: LS	EA	5
18019	36" x 60" Bottom, 38" x 62" Overall, Drain: SS	EA	5



CAULKING & SEALANTS

SILICONE SEALANTS

- Low odor.
- Excellent waterproof seal, providing a reliable seal in areas prone to consistent water exposure.
- Will not discolor most high-end metal finishes like chrome, bronze and nickel.
- Insulates thermally and electrically.
- Excellent flexibility & strong adhesion, provides a flexible, durable seal for both exterior and interior projects.

Item No.	Specifications	U/M	Std. Pkg.
15201	Silicone Sealant, 10.1 Oz Clear	EA	12
15202	Silicone Sealant, 10.1 Oz White	EA	12
15203	Silicone Sealant, 10.1 Oz Aluminum	EA	12
15204	Hi-Temp Silicone Sealant, 10.1 Oz Red	EA	12



Note: 15204 manufactured in the USA.

CAULKING GUNS

- All metal or plastic construction.
- Smooth and strong pressure.
- Comfortable pistol grip puncture wire and tip cutter included.

Item No.	Specifications	U/M	Std. Pkg.
36119	Caulking Gun Economy 1/10 Gallon	EA	40
36120	Nylon Caulk Gun	EA	18



WATER BASED DUCT SEALANT

- UL 181 B-M Certified.
- Non-flammable, with permanent flexibility, excellent water resistance and excellent sealing strength.
- High quality, fiber reinforced.
- Use on high & low velocity duct systems.
- Premium grade.

Item No.	Specifications	U/M	Std. Pkg.
15220	Water Based Duct Sealant, 10.1Oz Cartridge	EA	12
15221	Water Based Duct Sealant, 1 Gal	EA	2



 **MADE IN USA**

EXPANDING FOAM

- Fills large holes, gaps and cracks.
- Insulates and prevents drafts.
- Seals out insects and pests.
- Quick and easy to use.
- Interior/exterior use. Can be sanded, painted or stained.

Item No.	Specifications	U/M	Std. Pkg.
15241	Small Gaps & Cracks Expanding Foam, 12 Oz	EA	12
15242	Small Gaps & Cracks Expanding Foam, 20 Oz	EA	12
15243	Large Gaps & Cracks Expanding Foam, 12 Oz	EA	12
15244	Large Gaps & Cracks Expanding Foam, 20 Oz	EA	12



 **MADE IN USA**

STRAPS

P.P. WEBBING HANGER STRAPS

- Available in black & silver.
- Use for hanging flexible ducting and so on.
- High strength, fine texture & dyeing uniformity.
- Includes all fittings will need to install the vent.
- Premium utility webbing, this strapping is flexible and durable, a top choice for outdoor use.



Item No.	Specifications	U/M	Std. Pkg.
18622	1 3/4" P.P. Black Webbing Strap 100Yd	RL	24
18628	3" P.P. Black Webbing Strap 100Yd	RL	8
18632	1 3/4" x 100Yd P.P. Webbing Strap, Silver	RL	24
18633	3" P.P. Silver Webbing Strap 100Yd	RL	8

NYLON DUCT STRAPS

- Durable, heat-resistant and UV-resistant for long life.
- UL Listed, meets industry standards and can be used in a variety of applications.
- Easy to use, and easy to carry. Special tip design ensures easy insertion, obvious locking teeth provide a strong lock.
- Non-return design. Self-locking and fastening, the obvious locking teeth and ratchet mechanism stop it going back.
- Strong and soft nylon material with strong fixability.



Item No.	Specifications	U/M	Std. Pkg.
18650	24" Nylon Flex-Duct Strap for 6" Duct, Natural	EA	50
18651	36" Nylon Flex-Duct Strap for 10" Duct, Natural	EA	50
18652	48" Nylon Flex-Duct Strap for 14" Duct, Natural	EA	50
18655	24" Nylon Flex-Duct Strap for 6" Duct, Black	EA	50
18656	36" Nylon Flex-Duct Strap for 10" Duct, Black	EA	50
18657	48" Nylon Flex-Duct Strap for 14" Duct, Black	EA	50

TENSIONING TOOL

- Strong solid metal construction, red paint craft surface, tough and durable.
- Simple operation. Automatic tie cut-off, built-in cable tie cutter.
- Comfortable hand feeling. Pistol-style grip for comfort, adjustable tension.
- Strong solid metal construction makes it work efficiently.



Item No.	Specifications	U/M	Std. Pkg.
36108	Tensioning Tool	EA	1

CONDENSATE

CONDENSATE REMOVAL PUMP

- High startup safety. Two terminals are provided allowing the installer flexibility to connect air-handler shut-down.
- Fully automatic, easy installation. Utilizing the same great features but in a low-height design, is great for tight spaces.
- Shaft seal with long service life and low friction loss.
- Float switch can be integrated.
- Reversible tank cover with 3 inlet drain holes for flexible installation.



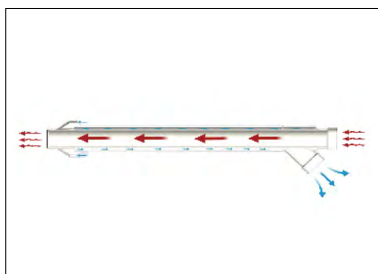
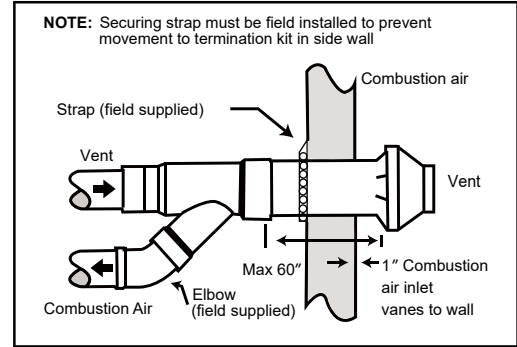
Item No.	Specifications	U/M	Std. Pkg.
18221	115V, 1/2 Gal, 1/50 Hp, 15' Max Lift W/Switch	EA	1
18222	115V, 1/2 Gal, 1/50 Hp, 20' Max Lift W/Switch	EA	1
18231	230V, 1/2 Gal, 1/50 Hp, 17' Max Lift W/Switch	EA	1

VENTILATION PRODUCTS

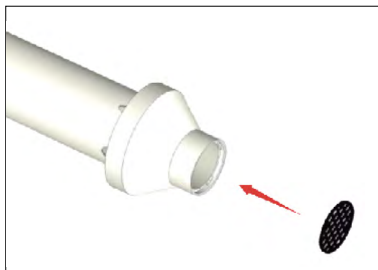
CONCENTRIC VENT KITS

- Concentric vent termination kit for water heater.
- These vents save time and money by reducing the amount of work required.
- For horizontal or vertical venting, requires only one hole to be cut rather than two and easy assembly.
- Includes all fittings will need to install the vent.

Item No.	Specifications	U/M	Std. Pkg.
22152	2" Concentric Vent Kit	EA	1
22153	3" Concentric Vent Kit	EA	1
22154	4" Concentric Vent Kit	EA	1



The concentric design cuts off the incoming fresh air and exhausts smoke. The preferred vertical roof terminal is not easily damaged, reduces the chance of absorbing pollutants, and sees less steam.



New Feature - A vent screen is attached for Concentric Vent Kit as a accessory. The vent screen is designed to keep birds and leaves from drop into the exhausting pipe. Comply with UL 1738 standard.



Cut only one hole instead of traditionally cutting two holes through roof or side wall for exhaust and intake pipes to complete installation.



VENTILATION PRODUCTS

HORIZONTAL VENT TERMINATION KIT

- Horizontal vent termination kit.
- Strengthen Polypropylene material.
- Non-Corrosive, Non-Conductive.
- Hide exhausting and intake pipes. Avoid exhausting and intake air mixing.



Item No.	Specifications	U/M	Std. Pkg.
22155	2" Horizontal Vent Kit	EA	6
22156	3" Horizontal Vent Kit	EA	6

RAIN CAP FOR CONCENTRIC VENT KIT

Item No.	Specifications	U/M	Std. Pkg.
22157	2" Rain Cap for Concentric Vent Kit	EA	8
22158	3" Rain Cap for Concentric Vent Kit	EA	8
22159	4" Rain Cap for Concentric Vent Kit	EA	8



WYE TEE FOR CONCENTRIC VENT KIT

Item No.	Specifications	U/M	Std. Pkg.
22160	2" Wye Tee for Concentric Vent Kit	EA	8
22161	3" Wye Tee for Concentric Vent Kit	EA	8
22162	4" Wye Tee for Concentric Vent Kit	EA	6



SCREEN FOR CONCENTRIC VENT KIT

Item No.	Specifications	U/M	Std. Pkg.
22165	2" Screen for Concentric Vent Kit	EA	200
22166	3" Screen for Concentric Vent Kit	EA	150
22167	4" Screen for Concentric Vent Kit	EA	100



VERSA CAP MULTI LAYERS VENT CAPS

- Adjustable aluminum versa cap.
- Recommended for flue, hot stack or b-vent installations.
- Non-clogging positive draft design.
- For flue or hot stack installation.
- Clamp fitting adjustable for all standard sizes.
- Aluminum model.



Item No.	Specifications	U/M	Std. Pkg.
22126	2 7/8" - 5" Vent Versa Cap	EA	12
22127	4 7/8" - 7" Vent Versa Cap	EA	12
22128	6 7/8" - 9" Vent Versa Cap	EA	12
22129	8 7/8" - 11" Vent Versa Cap	EA	6
22130	11 7/8" - 14 1/2" Vent Versa Cap	EA	2

VENTILATION PRODUCTS

PLASTIC BATHROOM/KITCHEN VENTING HOOD

- Free swinging louvers.
- UV inhibitor is used to help prevent the premature fading of vent.
- Available in color white and brown.



Item No.	Specifications	U/M	Std. Pkg.
22323B	Plastic Louvered Vent, 3" Brown, Hood Only	EA	1
22323BC	Plastic Louvered Vent, 3" Brown, W/11" Rigid Duct, Collar	EA	1
22323BS	Plastic Louvered Vent, 3" Brown, W/Grid, Hood Only	EA	1
22323BSC	Plastic Louvered Vent Kit, 3" Brown, W/Grid, 11" Rigid Duct, Collar	EA	1
22323W	Plastic Louvered Vent, 3" White, Hood Only	EA	1
22323WC	Plastic Louvered Vent, 3" White, W/11" Rigid Duct, Collar	EA	1
22323WS	Plastic Louvered Vent, 3" White, W/Grid, Hood Only	EA	1
22323WSC	Plastic Louvered Vent Kit, 3" White, W/Grid, 11" Rigid Duct, Collar	EA	12
22324B	Plastic Louvered Vent, 4" Brown, Hood Only	EA	12
22324BC	Plastic Louvered Vent Kit, 4" Brown, W/11" Rigid Duct, Collar	EA	1
22324BCK	Plastic Louvered Vent, 4" Brown, W/11" Rigid Duct, Collar, 5' Flex. Duct, Clamps	EA	1
22324BCK-UL	Plastic Louvered Vent, 4" Brown, W/11" Rigid Duct, Collar, 5' UL2158a Duct, Clamps	EA	1
22324BS	Plastic Louvered Vent, 4" Brown, W/Grid, Hood Only	EA	1
22324BSC	Plastic Louvered Vent Kit, 4" Brown, W/Grid, 11" Rigid Duct, Collar	EA	1
22324BSCK	Plastic Louvered Vent Kit, 4" Brown, W/Grid, 11" Rigid Duct, Collar, 5' Flex. Duct, Clamps	EA	1
22324BSCK-UL	Plastic Louvered Vent Kit, 4" Brown, W/Grid, 11" Rigid Duct, Collar, 5' UL2158a Duct, Clamps	EA	1
22324W	Plastic Louvered Vent, 4" White, Hood Only	EA	1
22324WC	Plastic Louvered Vent Kit, 4" White, W/11" Rigid Duct, Collar	EA	1
22324WCK	Plastic Louvered Vent Kit, 4" White, W/11" Rigid Duct, Collar, 5' Flex. Duct, Clamps	EA	1
22324WCK-UL	Plastic Louvered Vent Kit, 4" White, W/11" Rigid Duct, Collar, 5' UL2158a Duct, Clamps	EA	1
22324WS	Plastic Louvered Vent, 4" White, W/Grid, Hood Only	EA	1
22324WSC	Plastic Louvered Vent Kit, 4" White, W/Grid, 11" Rigid Duct, Collar	EA	1
22324WSCK	Plastic Louvered Vent Kit, 4" White, W/Grid, 11" Rigid Duct, Collar, 5' Flex. Duct, Clamps	EA	1
22324WSCK-UL	Plastic Louvered Vent Kit, 4" White, W/Grid, 11" Rigid Duct, Collar, 5' UL2158a Duct, Clamps	EA	1
22325B	Preferred Vent Kit, 5" Brown, Hood Only	EA	1
22325BC	Plastic Louvered Vent Kit, 5" Brown, W/11" Rigid Duct, Collar	EA	1
22325BS	Preferred Vent Kit, 5" Brown, W/Grid, Only Hood	EA	1
22325BSC	Plastic Louvered Vent Kit, 5" Brown, W/Grid, 11" Rigid Duct, Collar	EA	1
22325W	Preferred Vent Kit, 5" White, Face Hood Only	EA	12
22325WC	Plastic Louvered Vent Kit, 5" White, W/11" Rigid Duct, Collar	EA	1
22325WS	Plastic Louvered Vent, 5" White, W/Grid, Hood Only	EA	1
22325WSC	Plastic Louvered Vent Kit, 5" White, W/11" Rigid Duct, Collar	EA	1
22326B	Plastic Louvered Vent, 6" Brown, Hood Only	EA	1
22326BC	Plastic Louvered Vent Kit, 6" Brown, W/11" Rigid Duct, Collar	EA	1
22326BS	Plastic Louvered Vent Kit, 6" Brown, W/Grid, Hood Only	EA	1
22326BSC	Plastic Louvered Vent Kit, 6" Brown, W/Grid, 11" Rigid Duct, Collar	EA	1
22326W	Plastic Louvered Vent, 6" White, Hood Only	EA	1
22326WC	Plastic Louvered Vent Kit, 6" White, W/Tailpiece, Collar	EA	1
22326WS	Plastic Louvered Vent, 6" White W/Grid, Hood Only	EA	1
22326WSC	Plastic Louvered Vent Kit, 6" White W/Grid, 11" Tailpiece, Collar	EA	1

Note: UL2158A ducts, manufactured in the USA.

VENTILATION PRODUCTS

PLASTIC INTAKE LOUVER VENTS

- Fixed louvers.
- Metal screen prevents outside elements from entering the vent.
- Available in color white and brown.

Item No.	Specifications	U/M	Std. Pkg.
22343B	Air Intake Vent, 3" Brown, Hood Only	EA	12
22343BC	Air Intake Vent Kit, 3" Brown, W/11" Rigid Duct, Collar	EA	12
22343W	Air Intake Vent, 3" White, Hood Only	EA	12
22343WC	Air Intake Vent Kit, 3" White, W/11" Rigid Duct, Collar	EA	12
22344B	Air Intake Vent, 4" Brown, Hood Only	EA	12
22344BC	Air Intake Vent Kit, 4" Brown, W/11" Rigid Duct, Collar	EA	12
22344W	Air Intake Vent, 4" White, Hood Only	EA	12
22344WC	Air Intake Vent Kit, 4" White, W/11" Rigid Duct, Collar	EA	12
22345B	Air Intake Vent Kit, 5" Brown, Hood Only	EA	12
22345BC	Air Intake Vent Kit, 5" Brown, W/11" Rigid Duct, Collar	EA	8
22345W	Air Intake Vent Kit, 5" White, Hood Only	EA	8
22345WC	Air Intake Vent Kit, 5" White, W/11" Rigid Duct, Collar	EA	8
22346B	Air Intake Vent, 6" Brown, Hood Only	EA	8
22346BC	Air Intake Vent Kit, 6" Brown, W/11" Rigid Duct, Collar	EA	8
22346W	Air Intake Vent, 6" White, Hood Only	EA	8
22346WC	Air Intake Vent Kit, 6" White, W/11" Rigid Duct, Collar	EA	8



PLASTIC PREFERRED HOOD

- Aluminum preferred hood vent.
- Highly durable and Anti-UV.
- Spring controlled damper.
- Removable screen.
- Available in color white and brown.

Item No.	Specifications	U/M	Std. Pkg.
22383B	Plastic Preferred Vent, 3" Brown, Hood Only	EA	12
22383BC	Plastic Preferred Vent Kit, 3" Brown, W/11" Tailpiece	EA	12
22383W	Plastic Preferred Vent, 3" White, Hood Only	EA	12
22383WC	Plastic Preferred Vent Kit, 3" White, W/11" Tailpiece	EA	12
22384B	Plastic Preferred Vent, 4" Brown, Hood Only	EA	1
22384BC	Plastic Preferred Vent Kit, 4" Brown, W/11" Tailpiece	EA	1
22384BCK	Plastic Preferred Vent Kit, 4" Brown, W/11" Tailpiece, Collar, 8' Flex. Duct, Clamps	EA	1
22384BCK-UL	Plastic Preferred Vent Kit, 4" Brown, W/11" Tailpiece, Collar, 8' UL2158a Duct, Clamps	EA	1
22384W	Plastic Preferred Vent, 4" White, Hood Only	EA	1
22384WC	Plastic Preferred Vent Kit, 4" White, W/11" Tailpiece	EA	1
22384WCK	Plastic Preferred Vent Kit, 4" White, W/11" Tailpiece, Collar, 8' Flex. Duct, Clamps	EA	1
22384WCK-UL	Plastic Preferred Vent Kit, 4" White, W/11" Tailpiece, Collar, 8' UL2158a Duct, Clamps	EA	1



VENTING DUCT

VINYL DUCT

- Do not use for high temperature venting applications.
- Highly durable.
- Flexible white vinyl duct.

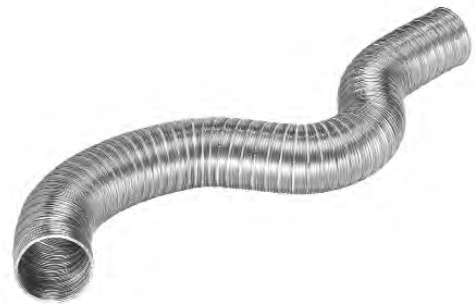
Item No.	Specifications	U/M	Std. Pkg.
22351	3" x 8' Vinyl Duct	EA	12
22352	3" x 20' Vinyl Duct	EA	1
22353	3" x 50' Vinyl Duct	EA	1
22354	4" x 8' Vinyl Duct	EA	1
22355	4" x 20' Vinyl Duct	EA	1
22356	4" x 50' Vinyl Duct	EA	1



SEMI-RIGID DUCT

- Flexible semi-rigid aluminum duct.
- Continuous airtight lock-seam.
- Non-combustible.

Item No.	Specifications	U/M	Std. Pkg.
22357	3" x 8' Semi-Rigid Duct	EA	14
22358	3" x 25' Semi-Rigid Duct	EA	10
22359	4" x 8' Semi-Rigid Duct	EA	8
22360	4" x 25' Semi-Rigid Duct	EA	6
22361	5" x 8' Semi-Rigid Duct	EA	5
22362	6" x 8' Semi-Rigid Duct	EA	3
22363	7" x 8' Semi-Rigid Duct	EA	5
22364	8" x 8' Semi-Rigid Duct	EA	4
22365	10" x 8' Semi-Rigid Duct	EA	2
22390	4" X 8' SEMI-RIGID DUCT, UL	EA	9



DAKOTA™ ALUMINUM FOIL DUCT

- Easy to install.
- High-quality flame-retardant aluminum and stainless steel clamps, which are high temperature resistant, corrosion resistant, long lasting and rustproof.
- Use the flexible duct for your different ventilation needs, whether it be for residential or commercial use.

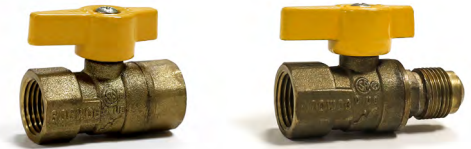
Item No.	Specifications	U/M	Std. Pkg.
22391	3" X 25' ALUMINUM FOIL DUCT	EA	1
22392	4" X 25' ALUMINUM FOIL DUCT	EA	1
22393	5" X 25' ALUMINUM FOIL DUCT	EA	1
22394	6" X 25' ALUMINUM FOIL DUCT	EA	1
22395	3" X 5' ALUMINUM FOIL DUCT	EA	1
22396	4" X 5' ALUMINUM FOIL DUCT	EA	1
22397	3" X 8' ALUMINUM FOIL DUCT	EA	24
22398	4" X 8' ALUMINUM FOIL DUCT	EA	24



GAS LINES

GAS VALVES

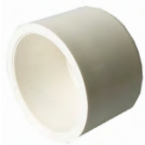
- Brass body with NPT threads.
- Durable, long-term use and excellent performance, tested to be 100% leak-proof.
- Easy to use and easy to install.
- UL listed for safe use with LP gas, natural gas and heated oils.
- Ideal for indoor and outdoor use.



Item No.	Specifications	U/M	Std. Pkg.
12426	1/2" Fip x 1/2" Fip Gas Ball Valve	EA	10
12427	3/4" Fip x 3/4" Fip Gas Ball Valve	EA	10
12428	1" Fip x 1" Fip Gas Ball Valve	EA	5
32001	1/2" OD Flare x 1/2" Fip Gas Ball Valve	EA	10
32002	5/8" OD Flare x 3/4" Fip Gas Ball Valve	EA	10

DWV PIPE & FITTINGS

DWV FITTINGS - COUPLINGS



Item No.	Specifications	U/M	Std. Pkg.
12201	1-1/2"	EA	100
12202	1-1/2" Repair	EA	100
12203	2"	EA	100
12204	2" Repair	EA	30
12205	3"	EA	60
12206	3" Repair	EA	10

DWV FITTINGS - REDUCING COUPLINGS



Item No.	Specifications	U/M	Std. Pkg.
12207	2" x 1-1/2"	EA	50
12208	3" x 2"	EA	20

DWV FITTINGS - 45° ELBOWS



Item No.	Specifications	U/M	Std. Pkg.
12209	1-1/2"	EA	100
12210	2"	EA	50
12211	2" Street Elbow	EA	50
12212	3"	EA	25
12213	3" Street Elbow	EA	25

DWV FITTINGS - 90° LONG ELBOWS



Item No.	Specifications	U/M	Std. Pkg.
12214	1-1/2"	EA	50
12215	2"	EA	25
12216	2" Street Elbow	EA	25
12217	3"	EA	10
12218	3" Street Elbow	EA	20

DWV FITTINGS - TEES



Item No.	Specifications	U/M	Std. Pkg.
12219	1-1/2"	EA	100
12220	2"	EA	35
12221	3"	EA	15

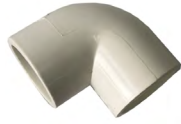
DWV FITTINGS - 90° ELBOWS



Item No.	Specifications	U/M	Std. Pkg.
12222	1-1/2"	EA	100
12223	2"	EA	50
12224	2" Street Elbow	EA	25
12225	3"	EA	25
12226	3" Street Elbow	EA	20

PVC PIPE & FITTINGS

SCH 40 PVC FITTINGS - 90° ELBOW S X S



Item No.	Specifications	U/M	Std. Pkg.
12301	[406-005], 1/2" S x S	EA	50
12302	[406-007], 3/4" S x S	EA	50
12303	[406-010], 1" S x S	EA	50
12304	[406-025], 2-1/2" S x S	EA	15
33001	[406-020], 2" S x S	EA	25
33003	[406-030], 3" S x S	EA	10

SCH 40 PVC FITTINGS - 90° STREET ELBOW S X SPG



Item No.	Specifications	U/M	Std. Pkg.
12305	[409-005], 1/2" S x SPG	EA	50
12306	[409-007], 3/4" S x SPG	EA	50
12307	[409-010], 1" S x SPG	EA	50

SCH 40 PVC FITTINGS - 90° ELBOW S X FPT



Item No.	Specifications	U/M	Std. Pkg.
12308	[407-074], 1/2" S x 3/4" FPT	EA	50
12309	[407-007], 3/4" S x 3/4" FPT	EA	50
12310	[407-010], 1" S x 1" FPT	EA	50

SCH 40 PVC FITTINGS - 90° ELBOW S X MPT



Item No.	Specifications	U/M	Std. Pkg.
12311	[410-007], 3/4" S x 3/4" MPT	EA	50
12312	[410-010], 1" S x 1" MPT	EA	50
33005	[410-005], 1/2" S x 1/2" MPT	EA	50

SCH 40 PVC FITTINGS - 45° ELBOW S X S



Item No.	Specifications	U/M	Std. Pkg.
12313	[417-005], 1/2" S x S	EA	50
12314	[417-007], 3/4" S x S	EA	50
12315	[417-010], 1" S x S	EA	50
12316	[417-025], 2-1/2" S x S	EA	15
33007	2" S x S	EA	25
33009	3" S x S	EA	10

SCH 40 PVC FITTINGS - COUPLINGS S X S



Item No.	Specifications	U/M	Std. Pkg.
12317	[429-005], Coupling, 1/2" S x S	EA	50
12318	[429-007], 3/4" S x S	EA	50
12319	[429-010], 1" S x S	EA	50
12320	[429-020], 2" S x S	EA	25
12321	[429-338FE], 3" S x 2" S	EA	10
12323	[429-030], 3" S x S	EA	10
33011	[429-015], 1 1/2" S x S	EA	25

SCH 40 PVC FITTINGS - MALE ADAPTERS S X MPT



Item No.	Specifications	U/M	Std. Pkg.
12324	[436-005], 1/2" S x 1/2" MPT	EA	50
12325	[436-101], 1/2" S x 3/4" MPT	EA	50
12326	[436-007], 3/4" S x 3/4" MPT	EA	50
12327	[436-131], 3/4" S x 1" MPT	EA	50
12328	[436-010], 1" S x 1" MPT	EA	50
12329	Pvc Adapter, 3/4" S x 3/4" Mght	EA	25
33015	[436-074], 1/2" MPT x 3/4" S	EA	50
33017	[436-102], 3/4" MPT x 1" S	EA	50

SCH 40 PVC FITTINGS - FEMALE ADAPTERS S X FPT



Item No.	Specifications	U/M	Std. Pkg.
12330	[435-005], 1/2" S x 1/2" FPT	EA	50
12331	[435-074], 3/4" S x 1/2" FPT	EA	50
12332	[435-007], 3/4" S x 3/4" FPT	EA	50
12333	[435-010], 1" S x 1" FPT	EA	50
33019	[435-102], 3/4" S x 1" FPT	EA	50

PVC PIPE & FITTINGS

SCH 40 PVC FITTINGS - TEES S X S X S



Item No.	Specifications	U/M	Std. Pkg.
12339	[401-005], 1/2" S x S x S	EA	50
12340	[401-007], 3/4" S x S x S	EA	50
12341	[401-010], 1" S x S x S	EA	50
12342	[401-025], 2-1/2" S X S X S	EA	15

SCH 40 PVC FITTINGS - THREADED CAPS



Item No.	Specifications	U/M	Std. Pkg.
12351	[448-005], 1/2" FPT	EA	50
12352	[448-007], 3/4" FPT	EA	50

SCH 40 PVC FITTINGS - BUSHINGS



Item No.	Specifications	U/M	Std. Pkg.
12354	[437-101], 3/4" SPG x 1/2" S	EA	100
12355	[438-101], 3/4" S x 1/2" FPT	EA	50
12356	[437-131], 1" SPG x 3/4" S	EA	50
12357	[437-251], 2" SPG x 1-1/2" S	EA	25
12358	[437-292], 2-1/2" SPG x 2" S	EA	10
12359	[437-339], 3" SPG x 2-1/2" S	EA	10
12360	[437-338], 3" SPG x 2" S	EA	10
33025	[437-130], 1" SPG x 1/2" S	EA	100
33027	[437-210], 1 1/2" SPG x 3/4" S	EA	25

SCH 40 PVC FITTINGS - UNIONS



Item No.	Specifications	U/M	Std. Pkg.
12334	[457-005], 1/2" S	EA	10
12335	[457-007], 3/4" S	EA	15
12336	[457-001], 1" S	EA	10

SCH 40 PVC FITTINGS - CLEANOUT TEES



Item No.	Specifications	U/M	Std. Pkg.
12343	3/4" S x S x Clean Out	EA	25

SCH 40 PVC FITTINGS - CAPS



Item No.	Specifications	U/M	Std. Pkg.
12344	[447-005], 1/2"	EA	50
12345	[447-007], 3/4"	EA	50
12346	[447-010], 1"	EA	50
12347	[447-015], 1-1/2"	EA	25
12348	[447-020], 2"	EA	10
12350	[447-030], 3"	EA	10

SCH 40 PVC FITTINGS - THREADED PLUGS



Item No.	Specifications	U/M	Std. Pkg.
12353	[450-007], 3/4"	EA	50

SCH 80 PVC FITTINGS - UNIONS



Item No.	Specifications	U/M	Std. Pkg.
12337	[897-005], 1/2" S	EA	10
12338	[897-007], 3/4" S	EA	10

PVC PIPE & FITTINGS

PVC TRAPS

- High tensile and impact strength.
- Resistant to acids, bases and salts.
- Easy installation.

Item No.	Specifications	U/M	Std. Pkg.
12415	3/4" SCH. 40 P-TRAP	EA	50
12416	3/4" SCH. 40 R-TRAP	EA	50
12417	3/4" SCH. 40 J-TRAP	EA	50
12418	1" SCH. 40 P-TRAP	EA	10
12419	1" SCH. 40 R-TRAP	EA	10



PVC PIPE

- High tensile and impact strength.
- Acid and alkali resistance.

Item No.	Specifications	U/M	Std. Pkg.
12443	1/2" 315 PSI	FT	1
12444	3/4" 200 PSI	FT	1
12445	3/4" SCH 40 400 PSI	FT	1
12446	1" 200 PSI	FT	1
12447	1" SCH 40	FT	1
12448	2-1/2" SCH 40	FT	1



DWV PIPES

- Good insulation, assuring a safe system.
- Resistant to acids, bases and salts, assuring a lower maintenance cost and a longer performance life.
- Resistant to compression and impact.

Item No.	Specifications	U/M	Std. Pkg.
12449	2" SCH 40	FT	10
12450	3" SCH 40	FT	10



PVC UTILITY BALL VALVES

- EPDM seat seals and o-rings.
- Fits both Schedule 40 and 80 pipe.
- Corrosion-resistant PVC.

Item No.	Specifications	U/M	Std. Pkg.
12361	[2622-005], 1/2" S x S	EA	5
12362	[2622-007], 3/4" S x S	EA	5
12363	[2622-010], 1" S x S	EA	5



COPPER TUBING

PANCAKE COIL

- Copper refrigerator tube has the features of high temperature resistance, corrosion resistance, oxidation resistance, durability, long service life.
- Having strong heat transfer capability because the copper tubes are hollow.
- Good heat dissipation and refrigeration capability, high strength at low temperature.
- High dimensional accuracy. Smooth bending allows copper tubes to bend at any angle.
- Refrigerator tubing is not only used for refrigerator, freezer and air conditioner as refrigeration tubing coil, but also used as a HVAC system pipe.



Item No.	Specifications	U/M	Std. Pkg.
90001	1/4" OD X 50'	EA	1
90002	5/16" OD X 50'	EA	1
90003	3/8" OD X 50'	EA	1
90004	1/2" OD X 50'	EA	1
90005	5/8" OD X 50'	EA	1
90006	3/4" OD X 50'	EA	1
90007	7/8" OD X 50'	EA	1
90008	1 1/8" OD X 50'	EA	1

COPPER FITTINGS

90° ELBOWS C X C



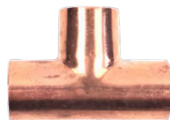
Item No.	Specifications	U/M	Std. Pkg.
13001	3/8" OD 1/4" ID	EA	25
13002	5/16" OD 3/16" ID	EA	25
13003	1/2" OD 3/8" ID	EA	25
13004	5/8" OD 1/2" ID	EA	25
13005	3/4" OD 5/8" ID	EA	25
13006	7/8" OD 3/4" ID	EA	25
13007	1-1/8" OD 1" ID	EA	10
13008	1-3/8" OD 1-1/4" ID	EA	5
13009	1-5/8" OD 1-1/2" ID	EA	5

COUPLINGS



Item No.	Specifications	U/M	Std. Pkg.
13101	1/4" OD 1/8" ID	EA	25
13102	3/8" OD 1/4" ID	EA	25
13103	5/16" OD 3/16" ID	EA	25
13104	1/2" OD 3/8" ID	EA	25
13105	5/8" OD 1/2" ID	EA	25
13106	3/4" OD 5/8" ID	EA	25
13107	7/8" OD 3/4" ID	EA	25
13108	1-1/8" OD 1" ID	EA	25
13109	1-3/8" OD 1-1/4" ID	EA	10
13110	1-5/8" OD 1-1/2" ID	EA	10

TEES



Item No.	Specifications	U/M	Std. Pkg.
13301	1/4" OD 1/8" ID	EA	50
13302	3/8" OD 1/4" ID	EA	25
13303	1/2" OD 3/8" ID	EA	25
13304	5/8" OD 1/2" ID	EA	25
13305	3/4" OD 5/8" ID	EA	25
13306	7/8" OD 3/4" ID	EA	20
13307	1-1/8" OD 1" ID	EA	10
13308	1-3/8" OD 1-1/4" ID	EA	5
13309	1-5/8" OD 1-1/2" ID	EA	5

UNIONS



Item No.	Specifications	U/M	Std. Pkg.
13224	1/2" OD 3/8" ID	EA	25
13225	5/8" OD 1/2" ID	EA	10
13226	7/8" OD 3/4" ID	EA	10
13227	1-1/8" OD 1" ID	EA	10

BLACK FITTINGS

- UL Listed.
- National Pipe Taper (NPT) threads.
- Great rust resistance.

UNIONS, BLACK IRON FITTINGS



Item No.	Specifications	U/M	Std. Pkg.
12001	1/2"	EA	120
12002	3/4"	EA	20
12003	1"	EA	40
32258	1 1/2"	EA	1

90° ELBOW, BLACK IRON FITTINGS



Item No.	Specifications	U/M	Std. Pkg.
12013	1/2"	EA	220
12014	3/4"	EA	120
12015	1"	EA	60
32215	1-1/4"	EA	20
32216	1-1/2"	EA	20
32217	2"	EA	20

REDUCING COUPLINGS, BLACK IRON FITTINGS



Item No.	Specifications	U/M	Std. Pkg.
12007	1/2" x 1/4"	EA	1
12008	3/4" x 1/4"	EA	280
12009	3/4" x 1/2"	EA	200
12010	1" x 1/4"	EA	140
12011	1" x 1/2"	EA	25
12012	1" x 3/4"	EA	120
32204	1-1/4" x 1/2"	EA	1
32205	1-1/4" x 3/4"	EA	1
32206	1-1/4" x 1"	EA	1
32207	1-1/2" x 1/2"	EA	1
32208	1-1/2" x 3/4"	EA	1
32209	1-1/2" x 1"	EA	1
32210	1-1/2" x 1-1/4"	EA	1
32211	2" x 3/4"	EA	1
32212	2" x 1"	EA	1
32213	2" x 1-1/4"	EA	1
32214	2" x 1-1/2"	EA	1

COUPLINGS, BLACK IRON FITTINGS



Item No.	Specifications	U/M	Std. Pkg.
12004	1/2"	EA	75
12005	3/4"	EA	160
12006	1"	EA	100
32201	1-1/4"	EA	18
32202	1-1/2"	EA	12
32203	2"	EA	4

90° STREET ELBOW, BLACK IRON FITTINGS



Item No.	Specifications	U/M	Std. Pkg.
12016	1/2"	EA	70
12017	3/4"	EA	30
12018	1"	EA	80

45° ELBOW, BLACK IRON FITTINGS



Item No.	Specifications	U/M	Std. Pkg.
12019	1/2"	EA	60
12020	3/4"	EA	140
12021	1"	EA	80
32220	1-1/4"	EA	20
32221	1-1/2"	EA	20
32222	2"	EA	20

90° REDUCING ELBOW



Item No.	Specifications	U/M	Std. Pkg.
32218	3/4" x 1/2"	EA	20
32219	1" x 3/4"	EA	20

BLACK FITTINGS

REDUCING TEES, BLACK IRON FITTINGS



Item No.	Specifications	U/M	Std. Pkg.
12025	3/4" x 1/2" x 1/2"	EA	100
12026	3/4" x 3/4" x 1/2"	EA	100
32226	1/2" x 1/2" x 3/4"	EA	30
32227	3/4" x 1/2" x 3/4"	EA	20
32228	3/4" x 3/4" x 1"	EA	20
32229	1" x 1/2" x 1/2"	EA	10
32230	1" x 1/2" x 1"	EA	10
32231	1" x 3/4" x 1/2"	EA	10
32232	1" x 3/4" x 3/4"	EA	10
32233	1" x 1" x 1/2"	EA	10
32234	1" x 1" x 3/4"	EA	10
32235	1-1/4" x 3/4" x 3/4"	EA	6
32236	1-1/4" x 3/4" x 1-1/4"	EA	6
32237	1-1/4" x 1/2" x 1-1/4"	EA	6
32238	1-1/4" x 1" x 1"	EA	6
32239	1-1/4" x 1-1/4" x 1/2"	EA	6
32240	1-1/4" x 1-1/4" x 3/4"	EA	6
32241	1-1/4" x 1-1/4" x 1"	EA	6
32242	1-1/2" x 1-1/2" x 3/4"	EA	6
32243	1-1/2" x 1-1/2" x 1/2"	EA	6
32244	1-1/2" x 1-1/2" x 1"	EA	6
32245	1-1/2" x 1-1/2" x 1-1/4"	EA	6
32246	2" x 2" x 1/2"	EA	4
32247	2" x 2" x 3/4"	EA	4
32248	2" x 2" x 1"	EA	4
32249	2" x 2" x 1-1/4"	EA	4
32250	2" x 2" x 1-1/2"	EA	4

CAPS, BLACK IRON FITTINGS



Item No.	Specifications	U/M	Std. Pkg.
12031	1/2"	EA	600
12032	3/4"	EA	300
12033	1"	EA	200
32252	1-1/4"	EA	25
32253	1-1/2"	EA	25
32254	2"	EA	25

TEES, BLACK IRON FITTINGS



Item No.	Specifications	U/M	Std. Pkg.
12022	1/2"	EA	120
12023	3/4"	EA	80
12024	1"	EA	40
32223	1-1/4"	EA	6
32224	1-1/2"	EA	6
32225	2"	EA	4

BUSHINGS, BLACK IRON FITTINGS



Item No.	Specifications	U/M	Std. Pkg.
12027	1/2" x 3/8"	EA	600
12028	3/4" x 1/2"	EA	500
12029	1" x 1/2"	EA	320
12030	1" x 3/4"	EA	280
32251	1-1/4" x 1"	EA	50

PLUGS, BLACK IRON FITTINGS



Item No.	Specifications	U/M	Std. Pkg.
12034	1/2"	EA	800
12035	3/4"	EA	600
12036	1"	EA	240
32255	1-1/4"	EA	40
32256	1-1/2"	EA	40
32257	2"	EA	40

DRIP LEG KIT

DRIP LEG KIT NEW

- High-quality materials for a secure fit and long-lasting performance.
- Helps to extend the life of the gas appliance.
- The trap is designed to serve as a collection point for water particles or extraneous materials.
- It is effective in preventing debris from infiltrating and compromising the pilot or main burner assembly.

Item No.	Specifications	U/M	Std. Pkg.
12381	1/2" Natural Gas Drip Leg Kit	KT	1
12382	3/4" Natural Gas Drip Leg Kit	KT	1



12381

12382

BLACK STEEL PIPE & NIPPLES

- Nipple for joining two pipes or extending pipe length.
- National Pipe Taper (NPT) threads.
- Threaded on both ends.
- Made from steel for greater rust resistance than iron.



1/2" BLACK WELDED NIPPLES

Item No.	Specifications	U/M	Std. Pkg.
12101	1/2" x CL	EA	25
12102	1/2" x 1-1/2"	EA	25
12103	1/2" x 2"	EA	25
12104	1/2" x 2-1/2"	EA	25
12105	1/2" x 3"	EA	25
12106	1/2" x 3-1/2"	EA	25
12107	1/2" x 4"	EA	25
12108	1/2" x 4-1/2"	EA	25
12109	1/2" x 5"	EA	25
12110	1/2" x 5-1/2"	EA	25
12111	1/2" x 6"	EA	25
12112	1/2" x 7"	EA	25
12113	1/2" x 8"	EA	25
12114	1/2" x 9"	EA	25
12115	1/2" x 10"	EA	25
12116	1/2" x 11"	EA	25
12117	1/2" x 12"	EA	25

3/4" BLACK WELDED NIPPLES

Item No.	Specifications	U/M	Std. Pkg.
12118	3/4" x CL	EA	25
12119	3/4" x 1-1/2"	EA	25
12120	3/4" x 2"	EA	25
12121	3/4" x 2-1/2"	EA	25
12122	3/4" x 3"	EA	25
12123	3/4" x 3-1/2"	EA	25
12124	3/4" x 4"	EA	25
12125	3/4" x 4-1/2"	EA	25
12126	3/4" x 5"	EA	25
12127	3/4" x 5-1/2"	EA	25
12128	3/4" x 6"	EA	25
12129	3/4" x 7"	EA	25
12130	3/4" x 8"	EA	25
12131	3/4" x 9"	EA	25
12132	3/4" x 10"	EA	25
12133	3/4" x 11"	EA	25
12134	3/4" x 12"	EA	25

1" BLACK WELDED NIPPLES

Item No.	Specifications	U/M	Std. Pkg.
12135	1" x CL	EA	25
12136	1" x 2"	EA	25
12137	1" x 2-1/2"	EA	25
12138	1" x 3"	EA	25
12139	1" x 3-1/2"	EA	25
12140	1" x 4"	EA	25
12141	1" x 4-1/2"	EA	25
12142	1" x 5"	EA	25
12143	1" x 5-1/2"	EA	25
12144	1" x 6"	EA	25
12145	1" x 7"	EA	25
12146	1" x 8"	EA	25
12147	1" x 9"	EA	20
12148	1" x 10"	EA	20
12149	1" x 11"	EA	20
12150	1" x 12"	EA	20

- Nipple for joining two pipes or extending pipe length.
- National Pipe Taper (NPT) threads.
- Threaded on both ends.
- Made from steel for greater rust resistance than iron.



1/2" READY CUT BLACK PIPE

Item No.	Specifications	U/M	Std. Pkg.
12154	1/2" x 18"	EA	5
12155	1/2" x 24"	EA	5
12156	1/2" x 30"	EA	5
12157	1/2" x 36"	EA	5
12158	1/2" x 48"	EA	5
12159	1/2" x 60"	EA	5
12160	1/2" x 72"	EA	5

3/4" READY CUT BLACK PIPE

Item No.	Specifications	U/M	Std. Pkg.
12161	3/4" x 18"	EA	5
12162	3/4" x 24"	EA	5
12163	3/4" x 30"	EA	5
12164	3/4" x 36"	EA	5
12165	3/4" x 48"	EA	5
12166	3/4" x 60"	EA	5
12167	3/4" x 72"	EA	5

1" READY CUT BLACK PIPE

Item No.	Specifications	U/M	Std. Pkg.
12168	1" x 18"	EA	5
12169	1" x 24"	EA	5
12170	1" x 30"	EA	5
12171	1" x 36"	EA	5
12172	1" x 48"	EA	3
12173	1" x 60"	EA	3
12174	1" x 72"	EA	3

66-IN-1 BLACK NIPPLE PACK

- Size of 1/2", 3/4", 1" black steel nipple sets.
- Assortment pack, 6 each of CL to 6".
- National Pipe Taper (NPT) threads.

Item No.	Specifications	U/M	Std. Pkg.
12151	66 Piece 1/2"	EA	1
12152	66 Piece 3/4"	EA	1
12153	60 Piece 1"	EA	1



CONDUIT & FITTINGS

N/M FITTINGS CONDUIT WHIPS

- UL Listed.
- Cable consists of insulated conductors inserted into a non-metallic conduit with PVC connectors.
- Be designed for reliable use as a connection between air conditioning unit and electrical power source.
- UL and cUL Listed. The seal proof power whip assembly is assembled with all UL components designed for easy installation.
- Three distinct wire colors for ease of hook-up.



Item No.	Specifications	U/M	Std. Pkg.
15801	1/2" x 4' 10GA N/M Fittings Conduit Whip	EA	24
15802	1/2" x 6' 10GA N/M Fittings Conduit Whip	EA	24
15803	3/4" x 4' 8GA W/Ground N/M Fittings Conduit Whip	EA	24
15804	3/4" x 6' 8GA W/Ground N/M Fittings Conduit Whip	EA	12

M FITTINGS CONDUIT WHIPS

- UL Listed.
- Cable consists of insulated conductors inserted into a non-metallic conduit with zinc alloy connectors.
- Be designed for reliable use as a connection between air conditioning unit and electrical power source.
- Whip is a labor-saving and convenient tool kit for A / C unit connection.
- Three distinct wire colors for ease of hook-up.



Item No.	Specifications	U/M	Std. Pkg.
15805	1/2" x 4' 10GA M Fittings Conduit Whip	EA	24
15806	1/2" x 6' 10GA M Fittings Conduit Whip	EA	24
15807	3/4" x 4' 8GA W/Ground M Fittings Conduit Whip	EA	24
15808	3/4" x 6' 8GA W/Ground M Fittings Conduit Whip	EA	12

NON-METALLIC LIQUID TIGHT CONDUIT

- UL Listed.
- Made from high quality PVC. Smooth inside for easier wire pulling, no hazardous sharp edges or burrs, will not damage conductors. Light weight and lower installed cost. Quick installation, cuts with utility knife or PVC cutter.

Item No.	Specifications	U/M	Std. Pkg.
15841	1/2" x 100' Non-Metallic Conduit	RL	1
15842	3/4" x 100' Non-Metallic Conduit	RL	1



DISCONNECT SWITCHES

METAL DISCONNECT SWITCHES

- Fusible and non-fusible combination wall-mounted power sockets can be easily and safely disconnected from the power supply as required.
- The clearly visible ON / OFF label eliminates guesswork and provides a clean, modern look.
- UL listed, NEMA type 3R enclosure for outdoor use.
- Efficient and space-saving enclosure with unobstructed wiring troughs and easy removal of the lid and interior.
- Knockouts on back, bottom and sides offer a variety of configurations.
- The pull-out handle can store the "OFF" position in the compartment, helping to prevent the handle from being misplaced.
- Protective shield cannot be removed until the pullout handle is removed, disconnecting the power.



Item No.	Specifications	U/M	Std. Pkg.
15539	60A Non-Fused Metallic Disconnect	EA	6
15540	30A Fused Metallic Disconnect	EA	6
15541	60A Fused Metallic Disconnect	EA	6

PLASTIC DISCONNECT SWITCHES

- Fusible and non-fusible combination wall-mounted power sockets can be easily and safely disconnected from the power supply as required.
- Plastic enclosure, rainproof, suitable for harsh environmental conditions.
- The clearly visible ON / OFF label eliminates guesswork and provides a clean, modern look.
- UL Listed NEMA type 3R enclosure, pre-assembled for easy installation.
- Efficient and space-saving enclosure with unobstructed wiring troughs and easy removal of the lid and interior.
- Knockouts on back, bottom and sides offer a variety of configurations.
- The pull-out handle can store the "OFF" position in the compartment, helping to prevent the handle from being misplaced.



Item No.	Specifications	U/M	Std. Pkg.
15539NM	60A Non Fused Non-Metallic Disconnect	EA	1
15540NM	30A Fused Non-Metallic Disconnect	EA	1
15541NM	60A Fused Non-Metallic Disconnect	EA	1

POWER CORDS

REPLACEMENT POWER CORDS

- UL Listed.
- SJTW.
- Heavy-duty strain relief protects electrical connections resulting in longer cord life.
- Insulation stripped for easy connection and installation.
- Replace old and worn out cords, or extend your power cable.

Item No.	Specifications	U/M	Std. Pkg.
15510	3' x 16/3 SJTWA Power Cord, Straight Plug	EA	1
15511	8' x 16/3 SJTWA Power Cord, Straight Plug	EA	5
15512	8' x 14/3 SJTWA Power Cord, Straight Plug	EA	5
15513	6' x 16/3 SJTWA Power Cord-90 Degree Angle	EA	5
41001	6' x 16/3 SJTWA Power Cord Straight Plug	EA	50



CONTACTORS

DEFINITE PURPOSE CONTACTORS

- UL Listed.
- Easy to use and handle.
- Highly durable.

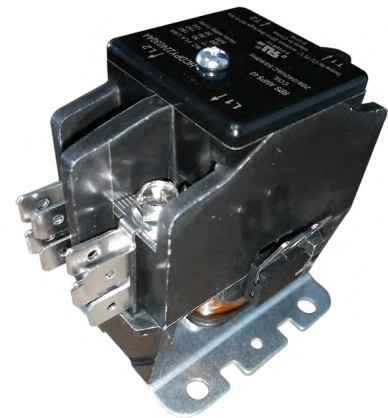
1/1.5 POLE

Item No.	Specifications	U/M	Std. Pkg.
DP1525120	1/1.5 Pole, 25FLA, 120V Coil	EA	1
DP152524	1/1.5 Pole, 25FLA, 24V Coil	EA	1
DP1525240	1/1.5 Pole, 25FLA, 240V Coil	EA	1
DP1530120	1/1.5 Pole, 30FLA, 120V Coil	EA	1
DP153024	1/1.5 Pole, 30FLA, 24V Coil	EA	1
DP1530240	1/1.5 Pole, 30FLA, 240V Coil	EA	1
DP1540120	1/1.5 Pole, 40FLA, 120V Coil	EA	1
DP154024	1/1.5 Pole, 40FLA, 24V Coil	EA	1
DP1540240	1/1.5 Pole, 40FLA, 240V Coil	EA	1



2 POLE

Item No.	Specifications	U/M	Std. Pkg.
DP220120	2 Pole, 20FLA, 120V Coil	EA	1
DP22024	2 Pole, 20FLA, 24V Coil	EA	1
DP220240	2 Pole, 20FLA, 240V Coil	EA	1
DP225120	2 Pole, 25FLA, 120V Coil	EA	1
DP22524	2 Pole, 25FLA, 24V Coil	EA	1
DP225240	2 Pole, 25FLA, 240V Coil	EA	1
DP225277	2 Pole, 25FLA, 277V Coil	EA	1
DP230120	2 Pole, 30FLA, 120V Coil	EA	1
DP23024	2 Pole, 30FLA, 24V Coil	EA	1
DP230240	2 Pole, 30FLA, 240V Coil	EA	1
DP240120	2 Pole, 40FLA, 120V Coil	EA	1
DP24024	2 Pole, 40FLA, 24V Coil	EA	1
DP240240	2 Pole, 40FLA, 240V Coil	EA	1

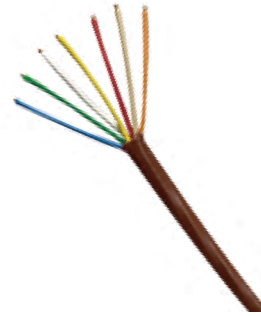


ELECTRICAL WIRE

CLASS 2 THERMOSTAT WIRE

Item No.	Specifications	U/M	Std. Pkg.
41522	18AWG 2 Conductors UL Thermostat Wire, 500Ft/Spool	RL	4
41523	18AWG 3 Conductors UL Thermostat Wire, 500Ft/Spool	RL	4
41524	18AWG 4 Conductors UL Thermostat Wire, 250Ft/Spool	RL	4
41525	18AWG 5 Conductors UL Thermostat Wire, 250Ft/Spool	RL	4
41526	18AWG 6 Conductors UL Thermostat Wire, 250Ft/Spool	RL	4
41527	18AWG 7 Conductors UL Thermostat Wire, 250Ft/Spool	RL	4
41528	18AWG 8 Conductors UL Thermostat Wire, 250Ft/Spool	RL	4
41530	18AWG 10 Conductors UL Thermostat Wire, 250Ft/Spool	RL	4
41532	20AWG 2 Conductors UL Thermostat Wire, 500Ft/Spool	RL	4
41533	20AWG 3 Conductors UL Thermostat Wire, 500Ft/Spool	RL	4
41534	20AWG 4 Conductors UL Thermostat Wire, 250Ft/Spool	RL	4
41535	20AWG 5 Conductors UL Thermostat Wire, 250Ft/Spool	RL	4
41536	20AWG 6 Conductors UL Thermostat Wire, 250Ft/Spool	RL	4
41537	20AWG 7 Conductors UL Thermostat Wire, 250Ft/Spool	RL	4
41538	20AWG 8 Conductors UL Thermostat Wire, 250Ft/Spool	RL	4
41540	20AWG 10 Conductors UL Thermostat Wire, 250Ft/Spool	RL	4

- UL Listed.
- PVC jacket, ensures excellent strip ability.
- Features solid bare copper conductors.
- Free from restricted metals and hazardous compounds.
- Smooth jacket eliminates snagging and tearing.

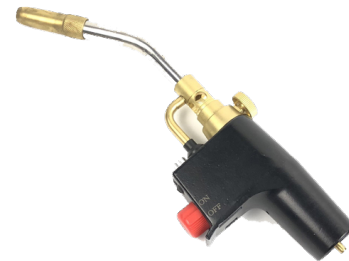


PROFESSIONAL TOOLS

SELF LIGHTING TORCH

- Stainless steel burn tube, cast aluminum body, brass burn tip.
- Pressure regulated with adjustable flame control valve.
- Pull trigger to light the torch.
- Safety trigger lock holds flame for extended periods.
- Pressure regulation allows the flame to burn in any direction and ensures consistent performance.
- Easy grip handle made of high impact plastic for high lasting durability.

Item No.	Specifications	U/M	Std. Pkg.
42540	Self Lighting Torch	EA	1



MISCELLANEOUS

SPRAY PAINTS

- Widely used in metal, wood, glass, leather goods, ceramics, ABS plastic and other material objects of the spraying or mending.
- High coverage, good adhesion, well hardness & flexibility, impact enduring.

Item No.	Specifications	U/M	Std. Pkg.
42500	Spray Paint Flat Cold Zinc Galvanize 10 Oz	EA	6
42501	Spray Paint Flat Black 10 Oz	EA	12
42502	Spray Paint Flat White 10 Oz	EA	12
42503	Spray Paint Gloss Black 10 Oz	EA	12
42504	Spray Paint Gloss White 10 Oz	EA	12

