



 **CRESCENT**
JOBBOX

Product Catalog

Trusted by the Trades.

TABLE OF CONTENTS

On-Site

Chests	4
Piano Boxes	8
Field Offices.....	10
Cabinets.....	12

Safety

Safety Cabinets	15
Canisters	17

Truck Boxes

Vehicle Drawer Storage.....	18
Crossovers	21
Innersides.....	27
Topsides	28
Underbed Boxes	29
Chests	30
Transfer Tanks.....	33
Accessories & Parts	35

Index

Index	37
-------------	----



Crescent JOBBOX Tradesman Steel Chests

Tradesman Steel Chests provide rugged, dependable, and secure on-site storage in commercial, industrial, and construction environments. Staked and welded hinges and a dual enclosed lock system provide maximum security that is highly resistant to saws, pry bars, and bolt cutters. Gas spring lid control and the exclusive Crescent JOBBOX Grip-Rite™ lifting channel provide easy and safe lid operation. Tradesman Steel Chests offer the perfect combination of security, durability, and utility required by trade professionals.

**Grip-Rite™
Lifting Channel**
Better grip on lid
for easier and
safer lid operation



**Lid Control
Gas Spring**

Eases lifting and
prevents lid from
slamming shut

EZ-Lock Arm
Securely locks
lid open

**Ergonomic Lifting
Handles**

Recessed to prevent
pinched fingers and
damage to the handle

**EZ-Loader 4-Way
Skid Bolsters**

Allow fork lift loading from
any side for quicker and
easier transport

Lock System Rain Drain
Protects lock and box contents
from moisture

**Dual Enclosed
Lock System**

High-security design
resists saws, pry
bars, and bolt cutters



Tradesman Steel Chests

- High-security design features enclosed dual lock system that resists saws, pry bars, and bolt cutters
- Grip-Rite™ lifting channel provides better grip on lid for easier and safer lid operation
- Rain-Drain feature in padlock housing prevents water from collecting in box
- Ergonomic lifting handles are positioned inside deep recesses to prevent pinched knuckles and damage to handles
- EZ-Loader 4-way skid bolsters allow fork lift loading from any side for quicker and easier transport
- Skid bolsters are compatible with casters (Part #1-320993, not included) for easy mobility
- Heavy-duty hinge is staked and welded to prevent the pin from being forced out for break in



Cat. No.	Length	Width	Height	Inside Length	Inside Width	Inside Height	Usable Cu. Ft.	App. Ship Wt.
CJB635990	36 in	19.5 in	22 in	34 in	18.5 in	18.5 in	8.9 ft³	88 lb
CJB636990	42 in	20 in	22 in	40 in	19 in	19 in	10.7 ft³	101 lb
CJB637990	48 in	24 in	27.5 in	46 in	23 in	24 in	18.3 ft³	140.5 lb
CJB638990	60 in	24 in	27.5 in	58 in	23 in	24 in	22.9 ft³	155 lb

Site-Vault™ Heavy-Duty Chests

- Site-Vault™ security system is a patented system with 3 locking points and a reflective orange lock indicator that shows when the box is locked or unlocked
- Heavy-duty beveled edge lid eliminates sharp front lid corners and enhances lid strength
- Dual built-in lid storage with integrated cargo nets is perfect for rain gear, PPE or small tools
- EZ-Lock support arm secures and locks lid in open position for safe use
- Upgraded lock system now allows usage of padlock models Master #1, #5, #175 and American #50
- Integrated sidewall cargo bin provides convenient storage for small tools
- Ergonomic lifting handles are positioned inside deep recesses to prevent pinched knuckles and damage to handles
- Heavy-duty EZ-Loader 4-way skid bolsters allow fork lift loading from any side for quicker and easier transport
- Skid bolsters are compatible with casters (Part #1-320993, not included) for easy mobility
- Heavy-duty hinge is staked and welded to prevent the pin from being forced out for break in



Cat. No.	Length	Width	Height	Inside Length	Inside Width	Inside Height	Usable Cu. Ft.	App. Ship Wt.
2-651990	30 in	20 in	19.75 in	28 in	19 in	16.2 in	5 ft³	60 lb
2-652990	36 in	20 in	27.5 in	34 in	19 in	24 in	9 ft³	98 lb
2-653990	42 in	20 in	27.5 in	40 in	19 in	24 in	10.5 ft³	118 lb
2-654990	48 in	24 in	30.75 in	46 in	23 in	27.2 in	16.7 ft³	148 lb
2-656990	48 in	30 in	36.75 in	46 in	29 in	33.2 in	25.6 ft³	190 lb
2-655990	60 in	24 in	30.75 in	58 in	23 in	27.2 in	21 ft³	182 lb
2-658990	72 in	24 in	30.75 in	70 in	23 in	27.2 in	25.3 ft³	203 lb

Crescent JOBOX Site-Vault™ Heavy-Duty Chests

Designed for security, easy access and excellent weather resistance, the Crescent JOBOX Chest yields an abundance of features including four-way skid bolsters, and a visual, three-point locking system.



STAKED & WELDED



HINGES

LID CONTROL



GAS SPRING

BEVELED



EDGE LID

Reinforced Lid with Full-Length Bolster

Reduces damage from excess stacking weight and resists pry bar entry

Site-Vault® Security System

The patented system has a full-length steel lock console with three locking points and fluorescent reflective orange tape that indicates chest is locked

More Padlock Compatibility

Use Master #1, #5, #175, and American 50

EZ-Lock Arm

Securely locks lid open

Dual Built-In Lid Storage Bins

Cargo nets hold items like first aid kit, manuals, rain gear and safety items

Recessed Handles

Prevent pinched fingers and damage to the handle

Integrated Sidewall Cargo Bin

Convenient storage for small tools and parts

EZ-Loader 4-Way Skid Bolsters

Allow fork lift loading from any side for quicker and easier transport



Welder's Box

- Cut-out for supply hose
- Compact and portable
- Staked and welded hinges
- Welded corner gussets
- 10-gauge latching hasp
- Wide lifting handles
- Textured powder paint finish



Cat. No.	Length	Width	Height	Inside Length	Inside Width	Inside Height	Usable Cu. Ft.	App. Ship Wt.
650990D	30 in	16 in	12 in	29 in	15.45 in	11.84 in	3.3 ft³	33 lb

Embedded Lock Small Chest

- Bolt cutter-proof lock housing
- Compact and portable
- Staked and welded hinges
- Welded corner gussets
- Heavy-duty lifting handles
- Bottom bolsters for lift and support
- 10-gauge latching hasp



Cat. No.	Length	Width	Height	Inside Length	Inside Width	Inside Height	Usable Cu. Ft.	App. Ship Wt.
651990D	31 in	18 in	15.5 in	28.48 in	12.75 in	11.95 in	4 ft³	70 lb

Slope Lid Chest

- Site-Vault™ security system with bolt-cutter proof housing
- Full-length steel lock console with three locking points
- Fully welded padlock housing
- Lid support rod props up lid for a flat working surface
- Grip-Rite™ lifting channel for easier opening
- Full-length A-frame lid bolster
- 1" locking arms
- Staked and welded hinge
- Lift-N-Stow hinged shelf to store bulky items in the bottom
- Recessed handles



Cat. No.	Length	Width	Height	Inside Length	Inside Width	Inside Height	Usable Cu. Ft.	App. Ship Wt.
1-680990	60 in	30 in	39.5 in	57.5 in	19.4 in	Bottom to Shelf 19.4 in Shelf to Top 13 in	32.7 ft³	243 lb

High-Capacity Drop-Front Chest

- Site-Vault™ security system with bolt-cutter proof housing
- Full-length steel lock console with two locking points
- Fully welded padlock housing
- Grip-Rite™ lifting channel for easier opening
- Full-length A-frame lid bolster
- Staked and welded hinge
- 1" locking arm
- Power cord access hole
- Recessed handles
- Lid lowering assist shock absorber



Cat. No.	Length	Width	Height	Inside Length	Inside Width	Inside Height	Usable Cu. Ft.	App. Ship Wt.
1-657990	60 in	31 in	45 in	57.5 in	27.5 in	39 in	41.5 ft³	340 lb

Site-Vault™ Heavy-Duty Piano Boxes

- Site-Vault™ is a patented security system with 3 locking points and a reflective orange lock indicator that shows when the box is locked or unlocked
- Heavy-duty beveled edge lid eliminates sharp front lid corners and enhances lid strength
- Built-in door storage with hooks and cargo nets for storing harnesses, rain gear, jackets, etc...
- Upgraded lock system now allows usage of padlock models Master #1, #5, #175 and American #50
- Integrated sidewall storage locker can be padlocked for personal items
- Ergonomic lifting handles are positioned inside deep recesses to prevent pinched knuckles and damage to handles
- Heavy-duty EZ-Loader 4-way skid bolsters allow fork lift loading from any side for quicker and easier transport
- Skid bolsters are compatible with casters (Part #1-320993, not included) for easy mobility
- High-strength top shelf is rated to hold 1,000 pounds
- Rigid 4" formed sidewalls resist wind-driven rain and pry bar break-in for long term durability and equipment protection



Cat. No.	Length	Width	Height	Inside Length	Inside Width	Inside Height	Drop Front	Usable Cu. Ft.	App. Ship Wt.
2-681990-01	47.9 in	31 in	51 in	47.9 in	29.9 in	47.2 in	No	39.1 ft³	298 lb
2-682990-01	60 in	31 in	51 in	59.9 in	29.9 in	47.2 in	No	48.9 ft³	354.000 lb
2-688990-01	60 in	31 in	39 in	60 in	29.9 in	35.2 in	No	36.5 ft³	279.000 lb
2-689990-01	74 in	31 in	51 in	59.9 in	29.9 in	47.2 in	No	60. ft³	413.000 lb
2-683990-01	60 in	31 in	51 in	59.9 in	29.9 in	47.2 in	Yes	48.9 ft³	380.000 lb
2-684990-01	74 in	31 in	51 in	73.9 in	29.9 in	47.2 in	Yes	60.3 ft³	437.500 lb
2-685990-01	74 in	35 in	64 in	74 in	34 in	60.2 in	No	87.4 ft³	520.000 lb

Crescent JOBOX Piano Boxes

The perfect combination of storage space, organization, and security, the world renowned Crescent JOBOX Piano Box is a job site must-have. Two storage bins on both side walls and the Crescent JOBOX Lift-N-Stow Shelf give you room to store any item, while the Site-Vault™ security system ensures that your valuables remain safe and secure.



Built-In Lid Storage

Easy access for hanging harnesses

Top Shelf

Designed for 1,000 lb. capacity to hold chain hoists

Full-Width Shelf

With 500 lb. capacity

Recessed Handles

Prevent pinched fingers and damage to the handle

Site-Vault® Security System

The patented system has a full-length steel lock console with three locking points and fluorescent reflective tape that indicates chest is unlocked

Side Wall Storage

With padlock-able box for personal items

Lift-N-Stow™ Shelf

Swings up to accommodate large items

Low Height Front Panel

For easier loading and unloading of equipment

Heavy-Duty Piano Box

- Two gas springs assist with opening and closing the door
- Ergonomic lifting handles are positioned inside deep recesses to prevent pinched knuckles and damage to handles
- Tall bottom bolsters for easily moving a loaded piano box with a forklift
- Rain-Drain feature in padlock housing prevents water from collecting in box
- High-security design features enclosed dual lock system that resists saws, pry bars, and bolt cutters



Cat. No.	Length	Width	Height	Inside Length	Inside Width	Inside Height	Usable Cu. Ft.	App. Ship Wt.
640990	60 in	30.5 in	49.88 in	56.5 in	28.5 in	45.3 in	48 ft³	308 lb

Field Office

- Large lockable desktop can be raised to make a flat working surface
- Beveled sidewalls for enhanced weather resistance and security
- Steel pegboard
- 30 cubic foot storage locker
- Rain gutters
- Upper door safety bar support with locking pin
- Stainless steel door hinges resist rust
- EZ-Loader® skid bolsters
- One handle lock
- Storage area for plans and binders on side wall



Cat. No.	Length	Width	Height	Storage Cap. Upper	Storage Cap. Lower	Usable Cu. Ft.	App. Ship Wt.
1-674990	63 in	42 in	80 in	60.6 ft³	9.4 ft³	100 ft³	660 lb

Mobile Field Office

- Full size desk, easily handles size "E" prints
- 11 built-in bins for organization while on the job
- Removable upper shelf opens the rear wall to add a monitor
- Extreme mobility for convenience on the job; roll it (through 36" doors), telehandle it, or hoist it
- Perfect desk height for comfort while working
- Slide-out bottom shelf for easy access to items



Cat. No.	Length	Width	Height	Storage Cap. Upper	Storage Cap. Lower	Usable Cu. Ft.	App. Ship Wt.
1-510990	63 in	33 in	80 in	46.5 ft ³	24.69 ft ³	61 ft ³	581 lb

Tradesman Field Office

- Large lockable desktop can be raised to make a flat working surface
- Built-in sidewall bins
- Upper door safety bar support with locking pin
- Full 42" deep bottom shelf
- Full door weather stripping
- EZ-Loader® 4-way skid bolsters
- One handle lock
- Lid lowering assist shock absorber
- EZ-Loader® skid bolsters
- Formed-in reinforcements strengthen skid bolsters



Cat. No.	Length	Width	Height	Storage Cap. Upper	Storage Cap. Lower	Usable Cu. Ft.	App. Ship Wt.
1-669990	63 in	42 in	79 in	60.1 ft ³	39 ft ³	99.6 ft ³	604 lb

Mesh Cabinets

- Removable shelves can be adjusted to multiple positions for maximum storage flexibility
- Sliding shelves provide easy access even when loaded to the maximum capacity of 200 lbs
- Built-in door shelves provide convenient highly visible storage
- Solid top and bottom construction to prevent items from falling through mesh
- Flat bottom shelf with no lip allows easy loading and unloading of heavy items
- White shelving provides high visibility in the cabinet
- Rugged 3 point locking system and continuous door hinges provide long term durability
- Conveniently fits through a standard 3' commercial doorway
- Push handle and shelf provide convenient storage for a step ladder, shelf can hold up to 200 lbs



Cat. No.	Length	Width	Height	Inside Length	Inside Width	Inside Height	Usable Cu. Ft.	App. Ship Wt.
1-402990	42.5 in	33 in	51.25 in	41.75 in	50.75 in	32.625 in	40 ft³	215 lb
1-401990	59.25 in	33 in	55 in	58.625 in	54.625 in	32.625 in	60.46 ft³	328 lb
1-403990	75 in	33 in	55 in	74.625 in	54.625 in	32.625 in	76.96 ft³	368 lb
1-400990	75 in	33 in	55 in	74.625 in	54.625 in	32.625 in	76.96 ft³	375 lb

Heavy-Duty Cabinets

- Nearly 17 linear feet of door shelf storage
- Three 5/8" steel locking pins per door
- Welded corner gussets
- Three heavy-duty lock hooks per door
- EZ-Loader® skid bolsters
- Access holes for electrical cables
- Staked and welded hinge
- Stainless steel door hinges resist rust
- Hand or foot operated door latch release system
- Grip-Rite™ lifting channel



Cat. No.	Description	Length	Width	Height	Usable Cu. Ft.	App. Ship Wt.
1-698990	Two Doors	60.125 in	30.25 in	60.75 in	58.7 ft³	436 lb
1-694990	Two Doors	60.750 in	24.25 in	60.25 in	47.5 ft³	379 lb
1-697990	Two Doors, Open Side	60.125 in	24.25 in	60.75 in	47.5 ft³	366 lb
1-695990	Four Doors, Both Sides	60.125 in	32.25 in	60.75 in	63.7 ft³	523 lb

Rolling Work Benches

- Fully adjustable interiors for maximum storage flexibility
- Heavy-duty 18-gauge steel drawers
- 75 lb. capacity drawers
- Ball bearing glides on drawers
- 4 heavy-duty casters; 2 fixed and 2 locking swivel
- Staked and welded hinge
- Welded corner gussets



Cat. No.	Description	Length	Width	Height	Usable Cu. Ft.	App. Ship Wt.
675990	2 Drawers, 2 Shelves, 4" Casters	43.375 in	26.875 in	38.5 in	21.7 ft³	267 lb
675996	2 Drawers, 2 Shelves, 6" Casters	43.375 in	26.875 in	40.5 in	21.7 ft³	280 lb
676990	4 Drawers, 1 Shelf, 4" Casters	43.375 in	26.875 in	38.5 in	21.7 ft³	294 lb
676996	4 Drawers, 1 Shelf, 6" Casters	43.375 in	26.875 in	40.5 in	21.7 ft³	307 lb
677990	Body with 6" Casters, Add Drawers & Shelves	49.375 in	26.875 in	40.625 in	24.6 ft³	264 lb
678990	6 Drawers, 1 Shelf, 6" Casters	49.375 in	26.875 in	40.625 in	24.6 ft³	342 lb

CABINETS

Extra-Heavy Duty Bin Cabinet

- Over 40' of shelving built into doors for holding smaller items
- Heavy-duty galvanized movable bin dividers
- Dividers can be moved in 2" increments or removed to create various size bins
- Divider assembly required
- Center EZ-Loader® skid bolster
- Formed-in reinforcements strengthen skid bolsters
- 7-gauge, one-piece steel bolsters with holes to install optional casters
- Access holes for electrical cables
- Staked and welded hinges
- Hand or foot operated door latch release system



Cat. No.	Length	Width	Height	Usable Cu. Ft.	App. Ship Wt.
1-693990	72 in	24 in	61 in	49 ft³	522 lb

Rolling Clam Shell Cabinet

- Eight 4" heavy-duty casters open and close cabinet
- Hinge stop prevents cabinet from fully opening and reduces potential for tipping
- High center handles for opening, closing, and moving cabinet
- 10-gauge latching hasp
- Rugged 16-gauge steel construction
- Moveable top and bottom shelves
- Open storage closet for tall items
- Lockable storage locker inside cabinet
- Only key entry area of padlock is exposed



Cat. No.	Length	Width	Height	Inside Length	Inside Width	Inside Height	Usable Cu. Ft.	App. Ship Wt.
692990	62.25 in	30 in	63.5 in	60 in	15.75 in	57.772 in	58 ft³	472 lb

Drawer Cabinet

- Drawers fully extend for easy access
- Hand or foot operated door latch release system
- Site-Vault™ security system
- Fully welded padlock housing
- EZ-Loader® skid bolsters
- Welded corner gussets
- Forklift accessible from all sides
- 4.5" deep top shelf and three 3" deep shelves on each door
- Recessed handles
- 2.5" drawers have 75-lb. load capacity and 5.5" drawers have 125-lb. load capacity.



Cat. No.	Length	Width	Height	Usable Cu. Ft.	App. Ship Wt.
1-679990	60.75 in	60.125 in	60.75 in	58.7 ft³	610 lb

Safety Cabinets

- UL certified; Crescent JOBOX® safety cabinets are fully insulated to provide superior fire retardant performance and eliminate gaps or hot spots
- 7-gauge steel EZ-Level™ skid bolsters come equipped with a leveling screw access hole to provide quick and easy access for leveling your cabinet
- Featuring EZ-Level™, our unique anti-tip design, which provides maximum stability and tipping resistance
- Highly visible safety and warning labels provide a permanent reminder and reference for following proper safety and usage practices
- Cabinets have a 3-point locking system, featuring a rugged lockable paddle handle to restrict access and reduce the potential for theft
- Tilted spill-guide interior shelving directs spills to the back of the cabinet and into the retention sump area for easy cleaning
- Bright white shelves makes it easier to identify spills
- High-quality powder paint finish has 10x the corrosion resistance, 5x the abrasion resistance, and 2x the chip and scratch resistance of liquid paint
- High and low vent connections



- Use yellow Crescent JOBOX® cabinets to store flammable liquids

Cat. No.	Capacity	Color	Length	Width	Height	Inside Length	Inside Width	Inside Height	Usable Cu. Ft.	App. Ship Wt.
1-750640	12 Gallons	Yellow	30.4 in	20.04 in	37.17 in	26.92 in	16.56 in	31.29 in	8.07 ft³	160 lb
1-753640	30 Gallons	Yellow	46.12 in	23.25 in	45.72 in	42.84 in	17.32 in	36.47 in	15.66 ft³	235 lb
1-756640	45 Gallons	Yellow	46.07 in	23.25 in	66.71 in	42.84 in	17.36 in	57.42 in	24.71 ft³	325 lb
1-758640	60 Gallons	Yellow	46.12 in	30.22 in	66.71 in	42.84 in	24.41 in	57.42 in	34.74 ft³	384 lb
1-759640	90 Gallons	Yellow	46.12 in	33.23 in	66.71 in	42.84 in	27.38 in	57.42 in	38.97 ft³	408 lb

- Use red Crescent JOBOX® cabinets to store paints, inks, and combustibles

Cat. No.	Capacity	Color	Length	Width	Height	Inside Length	Inside Width	Inside Height	Usable Cu. Ft.	App. Ship Wt.
1-750610	12 Gallons	Red	30.4 in	20.04 in	37.17 in	26.92 in	16.56 in	31.29 in	8.07 ft³	160 lb
1-753610	30 Gallons	Red	46.12 in	23.25 in	45.72 in	42.84 in	17.32 in	36.47 in	15.66 ft³	235 lb
1-756610	45 Gallons	Red	46.07 in	23.25 in	66.71 in	42.84 in	17.36 in	57.42 in	24.71 ft³	325 lb
1-758610	60 Gallons	Red	46.12 in	30.22 in	66.71 in	42.84 in	24.41 in	57.42 in	34.74 ft³	384 lb
1-759610	90 Gallons	Red	46.12 in	33.23 in	66.71 in	42.84 in	27.38 in	57.42 in	38.97 ft³	408 lb

- Use green Crescent JOBOX® cabinets to store pesticides and insecticides

Cat. No.	Capacity	Color	Length	Width	Height	Inside Length	Inside Width	Inside Height	Usable Cu. Ft.	App. Ship Wt.
1-750620	12 Gallons	Green	30.4 in	20.04 in	37.17 in	26.92 in	16.56 in	31.29 in	8.07 ft³	160 lb
1-753620	30 Gallons	Green	46.12 in	23.25 in	45.72 in	42.84 in	17.32 in	36.47 in	15.66 ft³	235 lb
1-756620	45 Gallons	Green	46.07 in	23.25 in	66.71 in	42.84 in	17.36 in	57.42 in	24.71 ft³	325 lb
1-758620	60 Gallons	Green	46.12 in	33.23 in	66.71 in	42.84 in	24.41 in	57.42 in	38.97 ft³	384 lb
1-759620	90 Gallons	Green	46.12 in	33.23 in	66.71 in	42.84 in	27.38 in	57.42 in	38.97 ft³	408 lb

Self Closing Safety Cabinets

- UL certified; Crescent JOBBOX® safety cabinets are fully insulated to provide superior fire retardant performance and eliminate gaps or hot spots
- 7-gauge steel EZ-Level™ skid bolsters come equipped with a leveling screw access hole to provide quick and easy access for leveling your cabinet
- Featuring EZ-Level™, our unique anti-tip design, which provides maximum stability and tipping resistance
- Highly visible safety and warning labels provide a permanent reminder and reference for following proper safety and usage practices
- Self-latching 3-point door locking system includes a heavy-duty enclosed staggering mechanism that ensures the doors close in proper order
- Fusible link assembly disconnects at 165° F to close doors automatically and keep cabinet contents protected
- Tilted spill-guide interior shelving directs spills to the back of the cabinet and into the retention sump area for easy cleaning
- Bright white shelves makes it easier to identify spills
- High-quality powder paint finish has 10x the corrosion resistance, 5x the abrasion resistance, and 2x the chip and scratch resistance of liquid paint



- Use yellow Crescent JOBBOX® cabinets to store flammable liquids

Cat. No.	Capacity	Color	Length	Width	Height	Inside Length	Inside Width	Inside Height	Usable Cu. Ft.	App. Ship Wt.
1-754640	30 Gallons	Yellow	46.12 in	23.25 in	45.72 in	42.84 in	17.32 in	36.47 in	15.66 ft³	235 lb
1-757640	45 Gallons	Yellow	46.07 in	23.25 in	66.71 in	42.84 in	17.36 in	57.42 in	24.71 ft³	325 lb

- Use red Crescent JOBBOX® cabinets to store paints, inks, and combustibles

Cat. No.	Capacity	Color	Length	Width	Height	Inside Length	Inside Width	Inside Height	Usable Cu. Ft.	App. Ship Wt.
1-754610	30 Gallons	Red	46.12 in	23.25 in	45.72 in	42.84 in	17.32 in	36.47 in	15.66 ft³	235 lb
1-757610	45 Gallons	Red	46.07 in	23.25 in	66.71 in	42.84 in	17.36 in	57.42 in	24.71 ft³	325 lb

- Use green Crescent JOBBOX® cabinets to store pesticides and insecticides

Cat. No.	Capacity	Color	Length	Width	Height	Inside Length	Inside Width	Inside Height	Usable Cu. Ft.	App. Ship Wt.
1-754620	30 Gallons	Green	46.12 in	23.25 in	45.72 in	42.84 in	17.32 in	36.47 in	15.66 ft³	235 lb
1-757620	45 Gallons	Green	46.07 in	23.25 in	66.71 in	42.84 in	17.36 in	57.42 in	24.71 ft³	325 lb

Type I Canisters

- Rugged tubular steel handle
- Spring-loaded, gasketed lid seals automatically after handle is released
- High quality terne plate steel construction for superior corrosion resistance
- High visibility safety label
- Zinc plated flame arrestors
- Single opening recommended for storage, but can be used with a funnel for pouring
- Use yellow to store flammable liquids and red to store paints, inks, and combustibles



Cat. No.	Color	Capacity	Dia. (in) x Hose	Approvals / Listings	App. Ship Wt.
821990Y	Yellow	1 gal (US), 4 l	9 x 6	UL/ULC	7 lb
811990YF*	Yellow	1 gal (US), 4 l	9 x 6	UL/ULC	5 lb
812990Y	Yellow	2 gal (US), 7.5 l	9 x 6	UL/ULC	6 lb
812990YF*	Yellow	2 gal (US), 7.5 l	9 x 6	UL/ULC	6 lb
815990Y	Yellow	5 gal (US), 19 l	11.5 x 9	UL/ULC	9 lb
815990YF*	Yellow	5 gal (US), 19 l	11.5 x 9	UL/ULC	9 lb
812990	Red	2 gal (US), 7.5 l	9 x 6	UL/ULC	6 lb
812990F*	Red	2 gal (US), 7.5 l	9 x 6	UL/ULC	6 lb
815990	Red	5 gal (US), 19 l	11.5 x 9	UL/ULC	9 lb
815990F*	Red	5 gal (US), 19 l	11.5 x 9	UL/ULC	9 lb

* Funnel Included

SAFETY
CANISTERS

Type II Canisters

- Rugged tubular steel handle
- Spring-loaded, gasketed lid seals automatically after handle is released
- High quality terne plate steel construction for superior corrosion resistance
- High visibility safety label
- Zinc plated flame arrestors
- Two openings, one for filling and one for pouring
- Spark-resistant brass tip on pouring hose
- Use yellow to store flammable liquids and red to store paints, inks, and combustibles



Cat. No.	Color	Capacity	Dia. (in) x Hose	Approvals / Listings	App. Ship Wt.
822990Y	Yellow	2 gal (US), 7.5 l	9 x 6	UL/ULC	8.5 lb
825990Y	Yellow	5 gal (US), 19 l	11.5 x 9	UL/ULC	12 lb
822990	Red	2 gal (US), 7.5 l	9 x 6	UL/ULC	8.5 lb
825990	Red	5 gal (US), 19 l	11.5 x 9	UL/ULC	12 lb

Safety Accessories

- Replacement nozzles and funnel for safety cans



Cat. No.	Description	Size	Product Weight
800990	Replacement Funnel	-	0.100 lb
830990	6" Replacement Nozzle	6 in	1.1 lb
835990	9" Replacement Nozzle	9 in	1.1 lb

DRAWER STORAGE

26" Long Floor Model with Three Drawers

- Extruded heavy-duty drawer glides support up to 75 lbs per drawer
- Latches automatically lock the drawers when closed
- Pins prevent the drawers from rolling off the glides
- Moveable dividers to create different size bins
- Heavy-gauge aluminum is light enough for easy mobility and durable enough to stand up to heavy loads on top of and inside drawers



Cat. No.	Length	Width	Height	Drawer Compartments	Plastic Dividers	Usable Cu. Ft.	App. Ship Wt.
1405980	26 in	36 in	6 in	3	2	3.6 ft³	51.0 lb

26" Long Stacked Model with Six Drawers

- Extruded heavy-duty drawer glides support up to 75 lbs per drawer
- Latches automatically lock the drawers when closed
- Pins prevent the drawers from rolling off the glides
- Moveable dividers to create different size bins
- Heavy-gauge aluminum is light enough for easy mobility and durable enough to stand up to heavy loads on top of and inside drawers



Cat. No.	Length	Width	Height	Drawer Compartments	Plastic Dividers	Usable Cu. Ft.	App. Ship Wt.
1406980	26 in	36 in	12 in	6	2	7 ft³	81.0 lb

50" Long Floor Models

- Extruded heavy-duty drawer glides support up to 75 lbs per drawer
- Latches automatically lock the drawers when closed
- Pins prevent the drawers from rolling off the glides
- Moveable dividers to create different size bins
- Heavy-gauge aluminum is light enough for easy mobility and durable enough to stand up to heavy loads on top of and inside drawers



Cat. No.	Length	Width	Height	Drawer Compartments	Plastic Dividers	Usable Cu. Ft.	App. Ship Wt.
1401980	50 in	12 in	6 in	1	5	2.5 ft³	31.0 lb
1402980	50 in	24 in	6 in	2	5	5.1 ft³	61.0 lb
1403980	50 in	36 in	6 in	3	5	7.6 ft³	89.0 lb
1404980	50 in	48 in	6 in	4	5	10.1 ft³	119.0 lb

50" Long Stacked Models

- Extruded heavy-duty drawer glides support up to 75 lbs per drawer
- Latches automatically lock the drawers when closed
- Pins prevent the drawers from rolling off the glides
- Moveable dividers to create different size bins
- Heavy-gauge aluminum is light enough for easy mobility and durable enough to stand up to heavy loads on top of and inside drawers



Cat. No.	Length	Width	Height	Drawer Compartments	Plastic Dividers	Usable Cu. Ft.	App. Ship Wt.
1407980	50 in	12 in	12 in	2	5	5.1 ft³	59.0 lb
1408980	50 in	12 in	18 in	3	5	7.6 ft³	85.0 lb
1409980	50 in	12 in	24 in	4	5	10.1 ft³	114.0 lb

Plastic Drawer Divider

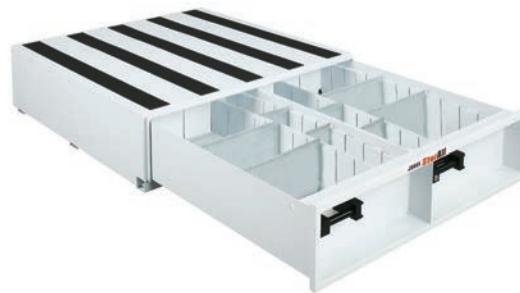
- For use with Crescent JOBOX aluminum drawer storage products
- Moveable divider to create different size bins
- Can be used with the following Crescent JOBOX items: 1401980 through 1409980
- Customize storage with the addition of this divider
- Durable divider
- Sold as singles



Cat. No.	Length	Width	Height	Plastic Dividers	Used On	App. Ship Wt.
1410980	0.125 in	11.5 in	4.5 in	1	1401980 - 1409980	0.2 lb

9" Tall Drawer Units

- 14-gauge steel StorAll® drawer storage is designed to provide extreme durability and safety with unprecedented versatility
- Perfect for work trucks, trailers, and vans, StorAll® provides up to 50% more drawer weight capacity and up to 20% more storage capacity than competitors
- Drawers are customizable with adjustable front-to-rear dividers and bin dividers
- Grip-and-Release™ system allows safe opening and closing of heavy drawers on sloped surfaces
- Cabinet top and bottom reinforced with 12-gauge steel channels
- Built-in rain gutter channel, anti-skid strips, full bulb-shaped automotive weather stripping and 16-gauge galvanized movable bin dividers all benefit the user
- Steel plunger engages internal drawer stops, drawers have 650 lb. load rating and steel bearing tractors with 1,000 lb. rated bearings make for smooth drawer operation
- Recessed drawer fronts protect the handles from damage



Cat. No.	Length	Width	Height	Drawer Compartments	Galvanized Dividers	Usable Cu. Ft.	App. Ship Wt.
661980	48 in	12 in	9 in	1	7	1 ft³	115.0 lb
662980	48 in	24 in	9 in	2	13	2.3 ft³	180.0 lb
663980	48 in	36 in	9 in	3	19	3.6 ft³	222.0 lb
664980	48 in	48 in	9 in	4	24	5 ft³	255.0 lb

13" Tall Drawer Units

- 14-gauge steel StorAll® drawer storage is designed to provide extreme durability and safety with unprecedented versatility
- Perfect for work trucks, trailers, and vans, StorAll® provides up to 50% more drawer weight capacity and up to 20% more storage capacity than competitors
- Drawers are customizable with adjustable front-to-rear dividers and bin dividers
- Grip-and-Release™ system allows safe opening and closing of heavy drawers on sloped surfaces
- Cabinet top and bottom reinforced with 12-gauge steel channels
- Built-in rain gutter channel, anti-skid strips, full bulb-shaped automotive weather stripping and 16-gauge galvanized movable bin dividers all benefit the user
- Steel plunger engages internal drawer stops, drawers have 650 lb. load rating and steel bearing tractors with 1,000 lb. rated bearings make for smooth drawer operation
- Recessed drawer fronts protect the handles from damage



Cat. No.	Length	Width	Height	Drawer Compartments	Galvanized Dividers	Usable Cu. Ft.	App. Ship Wt.
665980	48 in	12 in	13 in	1	7	1.8 ft³	155.0 lb
666980	48 in	24 in	13 in	2	13	4.2 ft³	245.0 lb
667980	48 in	36 in	13 in	3	19	6.6 ft³	305.0 lb
668980	48 in	48 in	13 in	4	24	9 ft³	380.0 lb

RSL™ Single Lid Paddle Handle Aluminum Crossovers

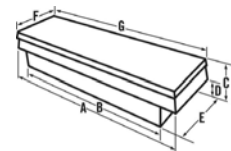
- Lid reinforced with RSL™ rigid structural lid bolster for superior strength
- Adjustable lid strikers keep the lid locked down tight for improved security
- High-strength body design resists cargo damage and protects the locking mechanism
- Leak proof stainless steel paddle handles prevent moisture from entering
- Self rising lids with dual gas spring lid lifts for easy access
- Small parts storage tray for organization
- Built in storage bins on both ends for convenient small item storage
- Lid locks from drivers side but can be opened from either side of vehicle



Bright Cat. No.	Black Cat. No.	Size	A	B	C	D	E	F	G	App. Ship Wt.
1-304000	1-304002	Mid-Size	62.75 in	50.5 in	14.25 in	9 in	17 in	20.25 in	63.5 in	36.0 lb
1-300000	1-300002	Fullsize	69.125 in	59.125 in	14.25 in	9 in	17 in	20.25 in	70 in	36.0 lb
1-301000	1-301002	Deep Fullsize	69.125 in	59.125 in	17.25 in	12 in	17 in	20.25 in	70 in	45.5 lb

Low-Profile, RSL™ Single Lid Paddle Handle Aluminum Crossovers

- Lid reinforced with RSL™ rigid structural lid bolster for superior strength
- Adjustable lid strikers keep the lid locked down tight for improved security
- High-strength body design resists cargo damage and protects the locking mechanism
- Leak proof stainless steel paddle handles prevent moisture from entering
- Self rising lids with dual gas spring lid lifts for easy access
- Small parts storage tray for organization
- Built in storage bins on both ends for convenient small item storage
- Lid locks from drivers side but can be opened from either side of vehicle



Bright Cat. No.	Black Cat. No.	Size	A	B	C	D	E	F	G	App. Ship Wt.
1-310000	1-310002	Mid-Size	62.75 in	50.5 in	14.25 in	11.812 in	17 in	20.25 in	63.5 in	36.0 lb
1-302000	1-302002	Fullsize	69.125 in	59.125 in	14.25 in	11.812 in	17 in	20.25 in	70 in	37.0 lb

Mid-Lid RSL™ Aluminum Crossovers

- Lid reinforced with RSL™ rigid structural lid bolster for superior strength
- Adjustable lid strikers keep the lid locked down tight for improved security
- High-strength body design resists cargo damage and protects the locking mechanism
- Leak proof stainless steel paddle handles prevent moisture from entering
- Self rising lids with dual gas spring lid lifts for easy access
- Small parts storage tray for organization
- Built in storage bins on both ends for convenient small item storage
- Lid locks from drivers side but can be opened from either side of vehicle



Bright	Black									
Cat. No.	Cat. No.	Size	A	B	C	D	E	F	G	App. Ship Wt.
1-306000	1-306002	Fullsize	69.125 in	59.125 in	14.25 in	9 in	17 in	20.25 in	70 in	37.0 lb

Slimline Single Lid Aluminum Crossovers

- Lid reinforced with RSL™ rigid structural lid bolster for superior strength
- Adjustable lid strikers keep the lid locked down tight for improved security
- High-strength body design resists cargo damage and protects the locking mechanism
- Leak proof stainless steel paddle handles prevent moisture from entering
- Self rising lids with dual gas spring lid lifts for easy access
- Small parts storage tray for organization
- Built in storage bins on both ends for convenient small item storage
- Lid locks from drivers side but can be opened from either side of vehicle



Bright	Black									
Cat. No.	Cat. No.	Size	A	B	C	D	E	F	G	App. Ship Wt.
1-311000	1-311002	Fullsize	69.125 in	59-1/8 in	16 in	10.75 in	10.375 in	13.5 in	70 in	33.5 lb

Hybrid Single Lid Crossover

- Durable steel box construction with durable powdercoat finish and non-rusting aluminum treadplate lid
- High-strength body design resists cargo damage and protects the locking mechanism
- Adjustable lid strikers keep the lid locked down tight for improved security
- Heavy-duty gas springs for easy access
- Leak proof stainless steel paddle handles prevent moisture from entering
- Weathertight seal forms from compressed foam gasket



Cat. No.	Color	Size	A	B	C	D	E	F	G	App. Ship Wt.
DHC1450000	Black	Fullsize	70.1875 in	60 in	13.72 in	11.07 in	20.062 in	20.843 in	71.062 in	56 lb

Gear-Lock™ Paddle Handle Single Lid Crossovers

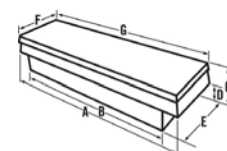
- RSL™ laminated rigid structural lid bolster for superior strength
- Self aligning hoop lid strikers lock the lid down tight for improved security
- High-strength body design resists cargo damage and protects the locking mechanism
- Gear-Lock™ latches ratchet lid tightly closed for superior security
- Wide stainless steel paddle handles resist corrosion
- Self rising lids with dual gas spring lid lifts for easy access
- Small parts storage tray for organization
- Built in storage bins on both ends for convenient small item storage
- Wide top box flanges provide extra strength and durability
- Lid locks from drivers side but can be opened from either side of vehicle



Bright	Black									
Cat. No.	Cat. No.	Size	A	B	C	D	E	F	G	App. Ship Wt.
1-351000	1-351002	Full Size Low Profile	69 in	59 in	14.25 in	12.125 in	20.25 in	21 in	70 in	56.0 lb
1-232000	1-232002	Full Size	69 in	59 in	14.25 in	9 in	20.25 in	21 in	70 in	50.5 lb
1-238000	1-238002	Full Size Mid-Lid	69 in	59 in	14.25 in	9 in	20.25 in	21 in	70 in	52.5 lb

Low-Profile Push Button Gear-Lock™ Single Lid Aluminum Crossovers

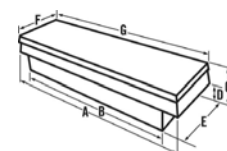
- Gear-Lock™ self adjusting dual rotary lock system always latches and closes for superior security
- Self-aligning latch pins pivot from side to side and lock the lid into Gear-Lock™ latch for premium security
- High-strength body and full-width lock console resist cargo damage and protect the locking mechanism
- RSL™ laminated rigid structural lid bolster for superior strength
- Tough Armor-Brite® powder paint finish has superior rust resistance
- Self rising lids with dual gas spring lid lifts for easy access
- 4-compartment storage tray assists with organization
- Built in storage bins on both ends for convenient small item storage
- Wide top box flanges provide extra strength and durability
- Lid locks from drivers side but can be opened from either side of vehicle



Bright Cat. No.	Black Cat. No.	Size	A	B	C	D	E	F	G	App. Ship Wt.
PAC1357000	PAC1357002	Fullsize	70 in	60.25 in	15.125 in	12.125 in	17.875 in	21 in	71.125 in	76.5 lb

Push-Button Premium Gear-Lock™ Single Lid Aluminum Crossovers

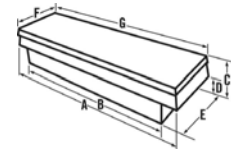
- Gear-Lock™ self adjusting dual rotary lock system always latches and closes for superior security
- Self-aligning latch pins pivot from side to side and lock the lid into Gear-Lock™ latch for premium security
- High-strength body and full-width lock console resist cargo damage and protect the locking mechanism
- RSL™ laminated rigid structural lid bolster for superior strength
- Tough Armor-Brite® powder paint finish has superior rust resistance
- Self rising lids with dual gas spring lid lifts for easy access
- 4-compartment storage tray assists with organization
- Built in storage bins on both ends for convenient small item storage
- Wide top box flanges provide extra strength and durability
- Lid locks from drivers side but can be opened from either side of vehicle



Bright Cat. No.	Black Cat. No.	Size	A	B	C	D	E	F	G	App. Ship Wt.
PAC1580000	PAC1580002	Fullsize	70.125 in	60.125 in	14.25 in	9 in	20.25 in	20.88 in	71 in	76.5 lb
PAC1582000	PAC1582002	Deep Fullsize	70.125 in	60.125 in	17.25 in	12 in	20.25 in	20.88 in	71 in	80.0 lb
PAC1585000	PAC1585002	Super Deep Fullsize	70.125 in	60.125 in	19.875 in	14.625 in	20.25 in	21 in	71 in	83.0 lb

Mid-Lid Gear-Lock™ Push Button Aluminum Crossovers

- Gear-Lock™ self adjusting dual rotary lock system always latches and closes for superior security
- Self-aligning latch pins pivot from side to side and lock the lid into Gear-Lock™ latch for premium security
- High-strength body and full-width lock console resist cargo damage and protect the locking mechanism
- RSL™ laminated rigid structural lid bolster for superior strength
- Tough Armor-Brite® powder paint finish has superior rust resistance
- Self rising lids with dual gas spring lid lifts for easy access
- 4-compartment storage tray assists with organization
- Built in storage bins on both ends for convenient small item storage
- Wide top box flanges provide extra strength and durability
- Lid locks from drivers side but can be opened from either side of vehicle

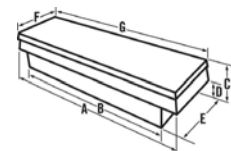


Bright Cat. No.	Black Cat. No.	Size	A	B	C	D	E	F	G	App. Ship Wt.
PAC1596000	PAC1596002	Fullsize	70.125 in	60.125 in	14.25 in	9 in	20.25 in	20.875 in	71 in	62.5 lb

TRUCK BOX
CROSSEOVERS

Limited Edition Premium Push Button Gear-Lock™ Truck Boxes

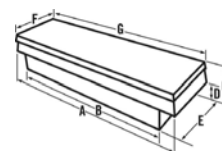
- Gear-Lock™ end-mounted push button locks ratchet lid tightly closed for superior security
- Self-aligning latch pins pivot from side to side and lock the lid into Gear-Lock™ latch for premium security
- High-strength body and full-width lock console resist cargo damage and protect the locking mechanism
- RSL™ laminated rigid structural lid bolster for superior strength
- Tough Armor-Brite® powder paint finish has superior rust resistance
- Self rising lids with dual gas spring lid lifts for easy access
- 4-compartment storage tray assists with organization
- Built in storage bins on both ends for convenient small item storage
- Wide top box flanges provide extra strength and durability



Cat. No.	Color	Size	A	B	C	D	E	F	G	App. Ship Wt.
1701000	Bright	Deep Super Duty & Fullsize Deep	71.125 in	58.75 in	18 in	12 in	20.25 in	21 in	72.125 in	77.0 lb

Gear-Lock™ Push Button Single Lid Steel Crossovers

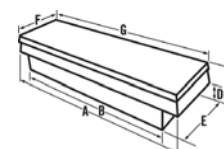
- Gear-Lock™ self adjusting dual rotary lock system always latches and closes for superior security
- Self-aligning latch pins pivot from side to side and lock the lid into Gear-Lock™ latch for premium security
- High-strength, self-rising lids will resist attempted break-ins better than other steel lids
- High-strength body design resists cargo damage and protects the locking mechanism
- End-mounted push buttons provide easy access
- Heavy-duty guards on single lid models protect the gas springs and extend long term durability
- Built-in storage bins on both ends and 4-compartment sliding tray for convenient small item storage
- Tough Armor-Brite® powder paint finish has superior rust resistance



White Cat. No.	Black Cat. No.	Size	A	B	C	D	E	F	G	App. Ship Wt.
PSC1458000	PSC1458002	Compact	60.125 in	50.125 in	11.25 in	6 in	20.25 in	20.875 in	61 in	77.0 lb
PSC1455000	PSC1455002	Fullsize	70.125 in	60.125 in	14.25 in	9 in	20.25 in	20.875 in	71 in	94.0 lb
PSC1456000	PSC1456002	Deep Fullsize	70.125 in	60.125 in	17.25 in	12 in	20.25 in	20.875 in	71 in	101.0 lb
PSC1457000	PSC1457002	Deep & Extra-Wide Fullsize	70.125 in	60.125 in	17.25 in	12 in	29.25 in	30 in	71 in	175.5 lb

Gull Wing Gear-Lock™ Push Button Steel Crossovers

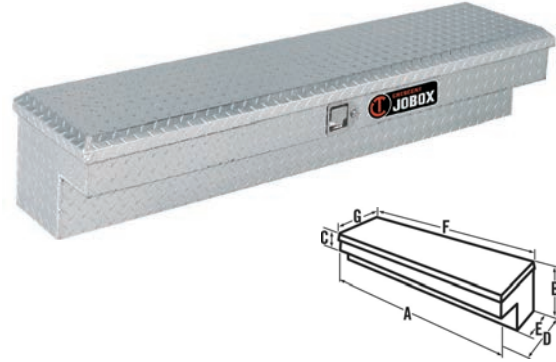
- Gear-Lock™ self adjusting dual rotary lock system always latches and closes for superior security
- Self-aligning latch pins pivot from side to side and lock the lid into Gear-Lock™ latch for premium security
- High-strength, self-rising lids will resist attempted break-ins better than other steel lids
- High-strength body design resists cargo damage and protects the locking mechanism
- End-mounted push buttons provide easy access
- Heavy-duty guards on single lid models protect the gas springs and extend long term durability
- Built-in storage bins on both ends and 4-compartment sliding tray for convenient small item storage



White Cat. No.	Black Cat. No.	Size	A	B	C	D	E	F	G	App. Ship Wt.
PSC1460000	PSC1460002	Fullsize	70.125 in	60.125 in	14.25 in	9 in	20.25 in	20.875 in	71 in	85.0 lb

Aluminum Innersides

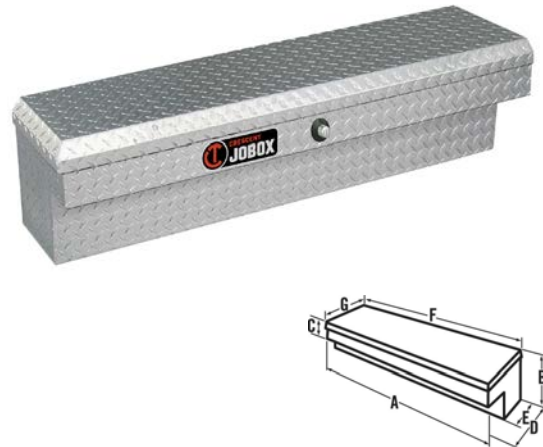
- Lid reinforced with bolster for superior strength
- Adjustable lid strikers keep the lid locked down tight for improved security
- High-strength body design resists cargo damage and protects the locking mechanism
- Leak proof stainless steel paddle handles prevent moisture from entering
- Self rising lids with gas spring lid lifts for easy access
- Includes mounting kit and supporting legs with hardware



Bright	Black										
Cat. No.	Cat. No.	Size	A	B	C	D	E	F	G	Usable Cu. Ft.	App. Ship Wt.
1-312000	1-312002	49" Long Lid	47.75 in	11 in	5.375 in	12.25 in	8 in	48.625 in	13 in	2.7 ft³	24.5 lb
1-313000	1-313002	59" Long Lid	57.75 in	11 in	5.375 in	12.25 in	8 in	58.625 in	13 in	3.2 ft³	30.0 lb

Gear-Lock™ Aluminum Innersides

- Gear-Lock™ self adjusting dual rotary lock system always latches and closes for superior security
- Self-aligning latch pins pivot from side to side and lock the lid into Gear-Lock™ latch for premium security
- High-strength RSL™ laminated 3-layer rigid structural lid is the strongest, most rigid aluminum lid we've tested
- Reinforced high-strength body and full-width lock console resists cargo damage and protects the lock system
- Heavy-duty guards protect the vertical-action gas spring lid lifts and help ensure long-term durability
- Built-in full-length storage compartment for small tools and parts
- Includes mounting kit and supporting legs with hardware



Bright	Black										
Cat. No.	Cat. No.	Size	A	B	C	D	E	F	G	Usable Cu. Ft.	App. Ship Wt.
PAN1441000	PAN1441002	48 1/2" Long Lid	47.75 in	11 in	5.375 in	12.125 in	7.875 in	48.5 in	13 in	2.7 ft³	28.5 lb
PAN1442000	PAN1442002	58 1/2" Long Lid	57.75 in	11 in	5.375 in	12.125 in	7.875 in	58.5 in	13 in	3.2 ft³	32 lb

Gear-Lock™ Steel Innersides

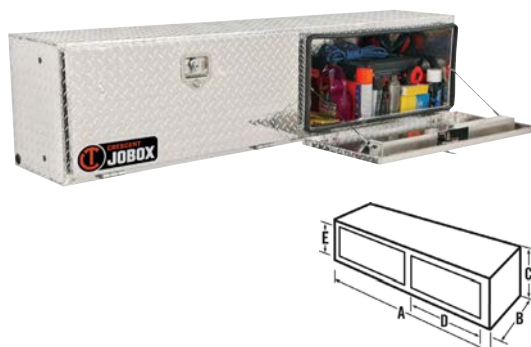
- Gear-Lock™ push button lock ratchets lid to box for superior security
- Self-aligning latch pins pivot from side to side and lock the lid into Gear-Lock™ latch for premium security
- High-strength body design resists cargo damage and protects the locking mechanism
- Self rising lids with gas spring lid lifts for easy access
- Tough Armor-Brite® powder paint finish has superior rust resistance
- RSL™ laminated rigid structural lid bolster for superior strength
- Built-in front storage for convenient small item storage
- Includes mounting kit and supporting legs with hardware



White Cat. No.	Black Cat. No.	Size	A	B	C	D	E	F	G	Usable Cu. Ft.	App. Ship Wt.
PSN1451000	PSN1451002	47 1/2" Long Lid	47.75 in	11.125 in	5.375 in	12.25 in	8.25 in	47.5 in	12 in	2.6 ft³	48.5 lb
PSN1452000	PSN1452002	58 1/2" Long Lid	57.75 in	11.125 in	5.375 in	12.25 in	8.25 in	58.5 in	12 in	3.2 ft³	60.0 lb

Aluminum Topsides

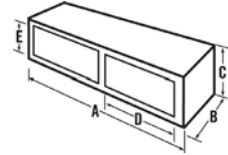
- Reinforced rain gutter doors seal around topside opening to prevent leakage or moisture
- Heavy-duty hinges provide high strength security and longevity
- Stainless steel rotating t-handle pulls the door tight against the seal
- Quick release coated aircraft cables allow door to drop down 180 degrees for full accessibility
- Automotive bulb weather stripping seals door 360°
- Includes mounting kit and supporting legs with hardware



Bright Cat. No.	Black Cat. No.	Size	A	B	C	D	E	Usable Cu. Ft.	App. Ship Wt.
572000	572002D	72" Long	72 in	15 in	17 in	40 in	12.75 in	9.4 ft³	55.0 lb
573000	573002	88" Long	88 in	15 in	17 in	40 in	12.75 in	11.5 ft³	58.0 lb
574000D	574002D	96" Long	96 in	15 in	17 in	40 in	12.75 in	12.5 ft³	63.0 lb

Steel Topsides

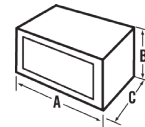
- Reinforced rain gutter doors seal around topside opening to prevent leakage or moisture
- Heavy-duty hinges provide high strength security and longevity
- Stainless steel rotating t-handle pulls the door tight against the seal
- Quick release coated aircraft cables allow door to drop down 180 degrees for full accessibility
- Automotive bulb weather stripping seals door 360°
- Includes mounting kit and supporting legs with hardware
- Tough Armor-Brite® powder paint finish has superior rust resistance



Cat. No.	Color	Size	A	B	C	D	E	Usable Cu. Ft.	App. Ship Wt.
577000	White	72" Long	72 in	15 in	17 in	40 in	12.75 in	9.4 ft³	118.0 lb
578000	White	88" Long	88 in	15 in	17 in	40 in	12.75 in	11.5 ft³	140.0 lb
579000	White	96" Long	96 in	15 in	17 in	40 in	12.75 in	12.5 ft³	146.0 lb

Steel Underbed Boxes

- Industrial grade steel hinges and drop down door for easy loading and unloading and the high strength door cables make these boxes versatile and strong
- Bulb-shaped automotive weather stripping and extended rain gutter help keep out the weather
- Quick release keyway connectors allow the door to drop down when cables are detached
- Rugged, one-piece lock housing helps protect the lock components and provides extra strength to the door
- Rotating t-handle with a reinforced cam lock, three-point locking system and one-piece lock housing provide greater security



White Cat. No.	Black Cat. No.	Length	Width	Height	Usable Cu. Ft.	App. Ship Wt.
7924160	7924162	24 in	16 in	14 in	3.06 ft³	55 lb
790980	790982	24 in	18 in	18 in	4.16 ft³	68 lb
7924240	7924242	24 in	24 in	24 in	7.96 ft³	94 lb
791980	791982	30 in	18 in	18 in	5.20 ft³	80 lb
7930240	7930242	30 in	24 in	24 in	9.95 ft³	110 lb
7936140	7936142	36 in	12 in	14 in	3.43 ft³	68 lb
7936160	7936162	36 in	16 in	14 in	4.0 ft³	76 lb
792980	792982	36 in	18 in	18 in	6.24 ft³	92 lb
7936240	7936242	36 in	24 in	24 in	11.94 ft³	126 lb
793980	793982	48 in	18 in	18 in	8.32 ft³	117 lb
7948240	7948242	48 in	24 in	24 in	15.92 ft³	158 lb
794980	794982	60 in	18 in	18 in	10.40 ft³	142 lb
7960240	7960242	60 in	24 in	24 in	18.90 ft³	190 lb
7972180	7972182	72 in	18 in	18 in	12.51 ft³	168 lb

Mounting Brackets

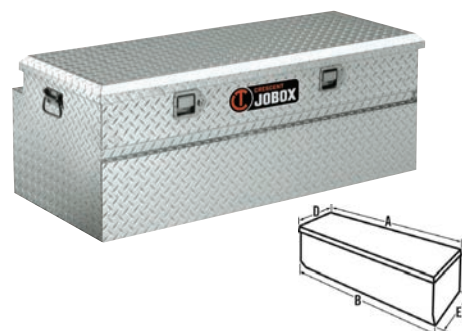
- Heavy-duty 2" C-channel brackets for mounting underbed boxes
- Brackets have multiple mounting holes for easy installation
- Sold in pairs



Cat. No.	Length	Width	Height	App. Ship Wt.
228000	18 in	2 in	18 in	15.0 lb
229000	24 in	2 in	24 in	33.5 lb

Aluminum Portable Chests

- Removable and portable aluminum chests offer versatility wherever secure storage is needed
- Wide lifting handles are easy to grip and will support heavy loads
- Rugged aluminum strikers will adjust vertically and horizontally to keep the lid locked down tight
- Leak proof stainless steel paddle handles prevent moisture from entering
- Full weatherstripping helps seal out moisture and dust
- Gas spring lid lifts automatically raise lid and allows for easier access



Cat. No.	Color	Size	A	B	C	D	E	App. Ship Wt.
220000D	Bright	37" Long	37 in	36 in	14.5 in	18 in	20 in	33.0 lb
221000D	Bright	49" Long	49 in	48 in	18 in	18 in	20 in	43.0 lb
222000D	Bright	57" Long	57 in	56 in	18 in	18 in	20 in	50.0 lb

Aluminum Chests for Trucks

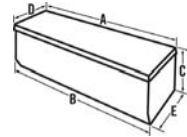
- Recessed hinge allows the lid to fully open when the back of the chest is placed against another object
- Rugged aluminum construction with reinforced lid for maximum strength and security
- Gas spring lid lifts allow easier access
- Leak proof stainless steel paddle handles prevent moisture from entering
- Full weatherstripping helps seal out moisture and dust
- Tapered lower front wall will fit better in trucks with all types of bed liners



Cat. No.	Color	Size	A	B	C	D	E	App. Ship Wt.
808000	Bright	36 in	36.75 in	36 in	15.5 in	17.25 in	17 in	25.5 lb
896260	Bright	58 in	59.5 in	58.5 in	17.875 in	18.75 in	17.75 in	47.5 lb
896262	Black	58 in	59.5 in	58.5 in	17.875 in	18.75 in	17.75 in	47.5 lb

Hybrid Fullsize Portable Chest

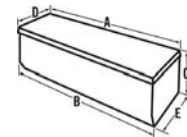
- Stylish tread plate aluminum lid with rigid steel base for support
- Removable and portable chest offers versatility wherever secure storage is needed
- Leak proof stainless steel paddle handles prevent moisture from entering
- Gas spring lid lifts automatically raise lid and allow for easier access
- Wide lifting handles are easy to grip and will support heavy loads
- Full weatherstripping helps seal out moisture and dust
- Rugged aluminum strikers will adjust horizontally to keep the lid locked down tight



Cat. No.	Color	Size	A	B	C	D	E	App. Ship Wt.
DYH1453002	Black	Fullsize	49 in	48 in	18 in	21 in	20 in	50 lb

Gear-Lock™ Paddle Handle Aluminum Chests

- Gear-Lock™ paddle handle lock ratchets lid to box for superior security
- Self aligning hoop strikers pivot from side-to-side and lock the lid for premium security
- RSL™ laminated rigid structural lid bolster for superior strength
- Self rising lids with dual gas spring lid lifts for easy access
- Full weatherstripping helps seal out moisture and dust
- Wide top box flanges provide extra strength and durability
- Angled edges on front and side walls provide best fit, even when installed with a bed liner



Bright	Black							
Cat. No.	Cat. No.	Size	A	B	C	D	E	App. Ship Wt.
1-350000	1-350002	Full Size Long	61 in	61.25 in	19.25 in	20.5 in	20 in	53.0 lb

Steel Portable Utility Chests

- 18-gauge steel construction with fully welded seams and formed edges
- Lock down chest and remove easily with quick connect brackets
- Sliding tray provides convenient storage for hand tools and small parts
- Full weatherstripping helps seal out moisture and dust
- Tough Armor-Brite® powder paint finish has superior rust resistance



Cat. No.	Color	Size	A	B	C	D	E	App. Ship Wt.
810000	White	32 in	32.625 in	32 in	12.75 in	11.25 in	10.75 in	31.5 lb

Steel Heavy-Duty Chest

- High strength beveled edge lid
- Sliding tray for small parts and tools
- Leak-proof stainless steel paddle handles
- Dual gas spring lid lifts for easy opening lid
- Bulb-shaped automotive weather stripping
- Channel reinforced front panel
- One-piece box body construction
- Recessed hinge



Cat. No.	Color	Size	A	B	C	D	E	App. Ship Wt.
817980	White	Fullsize Steel	59.125 in	58.5 in	19 in	20.5 in	20.25 in	129.0 lb

Gear-Lock™ Aluminum Chests

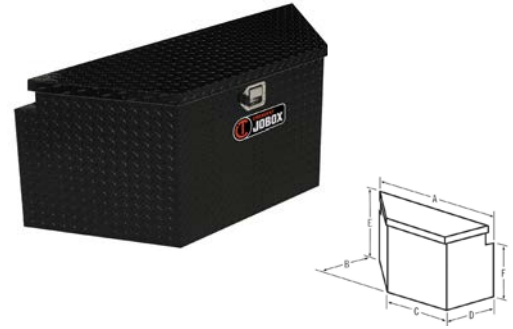
- Gear-Lock™ self adjusting dual rotary lock system always latches and closes for superior security
- Self-aligning latch pins pivot from side to side and lock the lid into Gear-Lock™ latch for premium security
- RSL™ laminated rigid structural lid bolster for superior strength
- High-strength body and full-width lock console resist cargo damage and protect the locking mechanism
- Self rising lids with dual gas spring lid lifts for easy access
- Leak proof stainless steel paddle handles prevent moisture from entering
- Universal fit design features a tapered bottom section on the ends and front wall



Bright	Black							
Cat. No.	Cat. No.	Size	A	B	C	D	E	App. Ship Wt.
PAH1420000	PAH1420002	SWB Fullsize	61 in	60.125 in	19.375 in	20.625 in	18.75 in	53.0 lb
PAH1424000	PAH1424002	Extra-Wide Fullsize	61 in	60.125 in	19.375 in	27.625 in	24.875 in	68.0 lb

Aluminum Trailer Tongue Boxes

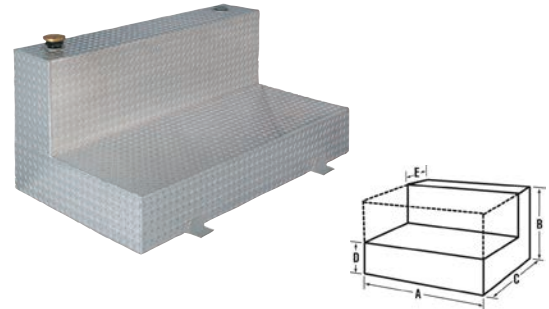
- Trailer tongue box mounts easily against rail or trailer wall
- Rugged aluminum construction with reinforced lid for maximum strength and security
- Offset gas spring lid lift allows easier access from drivers side
- Leak proof stainless steel paddle handles prevent moisture from entering
- Full weatherstripping helps seal out moisture and dust
- Tough Armor-Brite® powder paint finish has superior rust resistance



Cat. No.	Color	A	B	C	D	E
405000D	Bright	33 in	16 in	20 in	17.5 in	20.5 in
410000D	Bright	48 in	18 in	25 in	21.5 in	20.5 in

Aluminum Liquid Transfer Tanks

- Two full center baffles add extra strength and control the flow of the contents when moving
- 2" NPT reinforced bungs allow mounting a pump on either side of tank
- Four high strength brackets for securing the tank to the bed
- Lockable filler cap and coupler
- Heavy-duty 0.125" tread plate aluminum



Cat. No.	Color	Shape	Safe Fill (US)	Max Fill (US)	A	Capacity (US)	B	C	D	E	App. Ship Wt.
439000	Bright	Square	47 gal	52 gal	23.25 in	50 gal	23.25 in	23.25 in	-	-	64.0 lb
438000	Bright	Rectangular	91 gal	102 gal	45.25 in	100 gal	23.25 in	23.25 in	-	-	94.0 lb
437000	Bright	L-Shaped	99 gal	104 gal	57.5 in	100 gal	25 in	31 in	9 in	10 in	112.0 lb

Fuel-N-Tool Combo Aluminum Transfer Tank

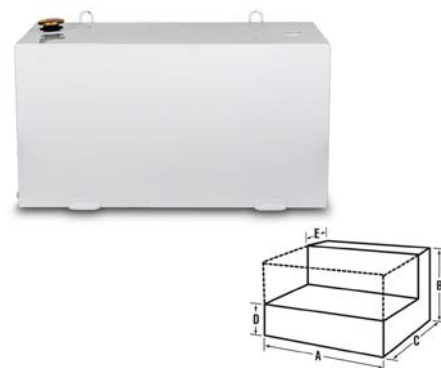
- Offers the convenience of a L-shaped transfer tank and a removable chest
- Two full center baffles add extra strength and control the flow of the contents when moving
- 2" NPT reinforced bungs allow mounting a pump on either side of the tank
- Four high strength brackets for securing the tank to the bed
- Leak proof stainless steel paddle handles prevent moisture and dirt from entering
- Chest provides 4.5 cubic feet of high-strength storage for tools and accessories
- RSL™ rigid structural lid, heavy-duty adjustable lid strikers, and high-strength body resist break-ins
- Self-rising lid has two heavy-duty gas spring lid lifts



Cat. No.	Color	Shape	Safe Fill (US)	Max Fill (US)	A	B	C	D	E	App. Ship Wt.
433000	Bright	L-Shaped	72 gal	77 gal	48.25 in	19 in	31 in	9 in	10.75 in	129.0 lb

Steel Transfer Tanks

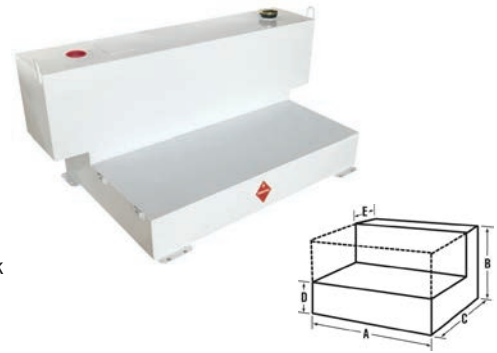
- Tanks have internal baffles for extra strength and to control the flow of contents when moving
- 2" NPT reinforced bungs allow mounting a pump on either side of the tank
- Built-in lifting rings to assist with lifting and moving an empty tank
- Lockable filler cap and coupler prevent excessive pressure build up
- Heavy-duty brackets to secure the tank to the truck bed
- Safety fill capacity allows space for the contents to expand in warm weather
- Drain plug allows for safe drainage of combustible liquids



White	Black										
Cat. No.	Cat. No.	Shape	Safe Fill (US)	Max Fill (US)	A	Capacity (US)	B	C	D	E	App. Ship Wt.
486000	—	Vertical	36 gal	42 gal	54 in	36 gal	19 in	9 in	-	-	97.0 lb
485000	—	Square	50 gal	55 gal	23.25 in	50 gal	24 in	23.25 in	-	-	85.5 lb
484000	484002	Rectangle	96 gal	107 gal	45.63 in	100 gal	24 in	23.25 in	-	-	145.0 lb
488000	488002	Low Profile L-Shape	76 gal	82 gal	46 in	85 gal	26 in	31 in	6.5 in	11 in	155.0 lb
482000	—	L-Shape	51 gal	54 gal	27 in	48 gal	26 in	31 in	9 in	11 in	106.0 lb
487000	—	L-Shape	88 gal	92 gal	54 in	88 gal	25 in	31 in	6.5 in	11 in	186.0 lb
480000	480002	L-Shape	103 gal	109 gal	54 in	100 gal	26 in	31 in	9 in	11 in	200.0 lb

Steel Transfer Tanks For 4-Door Trucks

- Built-in lifting rings to assist with lifting and moving an empty tank
- Lockable filler cap and coupler prevent excessive pressure build up
- Heavy-duty brackets to secure the tank to the truck bed
- Safety fill capacity allows space for the contents to expand in warm weather
- 2" NPT reinforced bungs allow mounting a pump on either side of the tank
- Drain plug allows for safe drainage of combustible liquids



White	Black											
Cat. No.	Cat. No.	Shape	Safe Fill (US)	Max Fill (US)	A	Capacity (US)	B	C	D	E	F	App. Ship Wt.
498000	498002	L-Shaped	98 gal	106 gal	60.25 in	100 gal	25 in	33 in	7.5 in	48.25 in	10.125 in	175.0 lb

Optional Casters

- Available in heavy-duty
- Set of 4 casters comes with two fixed and two swivel casters
- Size: 6 in; load rating: 3600 lb
- All purpose rubber tread for grip on many surfaces
- Wheels never puncture or go flat
- 3" x 3" hole patterns



Cat. No.	Width	Height	Load Rating	Size	Style	Used On
1-320990	-	-	2800 lb	4"	HD	-
1-321990	3.5 in	7.75 in	3600 lb	6 in	HD	All Crescent JOBOX
1-320993	3.5 in	6 in	3600 lb	6 in	HD	All Crescent JOBOX

Touch Up Paint

- Crescent JOBOX on site storage touch up paint
- Available in 12 oz cans
- Color is Crescent JOBOX red/rust



Cat. No.	Color	Used On	Product Weight
82936	Rust	All JOBOX Models	1.100 lb

Replacement Parts for Models 675, 676, 677 & 678



Cat. No.	Description	Length	Width	Height	Used On	Product Weight
608990	Shelf	21.875 in	16.875 in	-	Models 677 & 678	8.000 lb
605990	2-1/2" Deep Drawer	21.875 in	16.875 in	2.5 in	Models 675 & 676	16.000 lb
609990	2-1/2" Deep Drawer	21.875 in	16.875 in	2.5 in	Models 677 & 678	17.000 lb
606990	4-1/2" Deep Drawer	21.875 in	16.875 in	4.5 in	Models 675 & 676	19.000 lb
610990	4-1/2" Deep Drawer	21.875 in	16.875 in	4.5 in	Models 677 & 678	18.100 lb
607990	5-1/2" Deep Drawer	21.875 in	16.875 in	5.5 in	Models 675 & 676	19.000 lb
611990	5-1/2" Deep Drawer	21.875 in	16.875 in	5.5 in	Models 677 & 678	21.000 lb
616990	10" Deep Drawer	21.875 in	16.875 in	10 in	Models 675 & 676	17.800 lb
617990	10" Deep Drawer	21.875 in	16.875 in	10 in	Models 677 & 678	19.300 lb
612990	Optional 2nd Push Handle	21.875 in	16.875 in	2.0 in	Models 675 & 676	2.000 lb

Removable Trays

- Built-in handles
- Convenient for hand tools and small parts
- Hemmed edges add strength and eliminate sharp edges
- Powder paint



Cat. No.	Length	Width	Height	Used On
626990	22.187 in	8 in	4 in	1-654990, 1-655990, 1-658990
627990	28.187 in	8 in	4 in	1-656990
628990	18.187 in	8 in	4 in	1-652990, 1-653990
620990	21.875 in	8 in	4 in	635990

PRODUCT	PAGE	PRODUCT	PAGE	PRODUCT	PAGE
1401980.....	19	1-402990.....	12	2-654990.....	8
1402980.....	19	1-403990.....	12	2-655990.....	8
1403980.....	19	1-510990.....	11	2-656990.....	8
1404980.....	19	1-657990.....	8	2-658990.....	8
1405980.....	18	1-669990.....	11	2-681990-01.....	11
1406980.....	18	1-674990.....	10	2-682990-01.....	11
1407980.....	19	1-679990.....	14	2-683990-01.....	11
1408980.....	19	1-680990.....	7	2-684990-01.....	11
1409980.....	19	1-693990.....	13	2-685990-01.....	11
1410980.....	19	1-694990.....	12	2-688990-01.....	11
1701000.....	25	1-695990.....	12	2-689990-01.....	11
1-232000.....	23	1-697990.....	12	4050000.....	33
1-232002.....	23	1-698990.....	12	4100000.....	33
1-238000.....	23	1-750610.....	15	433000.....	34
1-238002.....	23	1-750620.....	15	437000.....	33
1-300000.....	21	1-750640.....	15	438000.....	33
1-300002.....	21	1-753610.....	15	439000.....	33
1-301000.....	21	1-753620.....	15	480000.....	34
1-301002.....	21	1-753640.....	15	480002.....	34
1-302000.....	21	1-754610.....	16	482000.....	34
1-302002.....	21	1-754620.....	16	484000.....	34
1-304000.....	21	1-754640.....	16	484002.....	34
1-304002.....	21	1-756610.....	15	485000.....	34
1-306000.....	22	1-756620.....	15	486000.....	34
1-306002.....	22	1-756640.....	15	487000.....	34
1-310000.....	21	1-757610.....	16	488000.....	34
1-310002.....	21	1-757620.....	16	488002.....	34
1-311000.....	22	1-757640.....	16	498000.....	35
1-311002.....	22	1-758610.....	15	498002.....	35
1-312000.....	28	1-758620.....	15	5720000.....	28
1-312002.....	28	1-758640.....	15	5720020.....	28
1-313000.....	28	1-759610.....	15	573000.....	28
1-313002.....	28	1-759620.....	15	573002.....	28
1-320990.....	35	1-759640.....	15	5740000.....	28
1-320993.....	35	228000.....	30	5740020.....	28
1-321990.....	35	229000.....	30	577000.....	29
1-350000.....	31	2200000.....	30	578000.....	29
1-350002.....	31	2210000.....	30	579000.....	29
1-351000.....	23	2220000.....	30	605990.....	36
1-351002.....	23	2-651990.....	8	606990.....	36
1-400990.....	12	2-652990.....	8	607990.....	36
1-401990.....	12	2-653990.....	8	608990.....	36

PRODUCT	PAGE	PRODUCT	PAGE	PRODUCT	PAGE
609990.....	36	7936160.....	29	CTB1410.....	4
610990.....	36	7936162.....	29	CTB1450.....	4
611990.....	36	7936240.....	29	CTB1710.....	4
612990.....	36	7936242.....	29	CTB1750.....	4
616990.....	36	793980.....	29	CTB2010.....	5
617990.....	36	793982.....	29	CTBR1850.....	6
620990.....	36	7948240.....	29	DHC1450000.....	23
626990.....	36	7948242.....	29	DYH1453002.....	31
627990.....	36	794980.....	29	PAC1357000.....	24
628990.....	36	794982.....	29	PAC1357002.....	24
640990.....	10	7960240.....	29	PAC1580000.....	24
6509900.....	7	7960242.....	29	PAC1580002.....	24
6519900.....	7	7972180.....	29	PAC1582000.....	24
661980.....	20	7972182.....	29	PAC1582002.....	24
662980.....	20	800990.....	18	PAC1585000.....	24
663980.....	20	808000.....	30	PAC1585002.....	24
664980.....	20	810000.....	32	PAC1596000.....	25
665980.....	20	812990.....	17	PAC1596002.....	25
666980.....	20	812990Y.....	17	PAH1420000.....	32
667980.....	20	812990F.....	17	PAH1420002.....	32
668980.....	20	812990YF.....	17	PAH1424000.....	32
675990.....	13	811990YF.....	17	PAH1424002.....	32
675996.....	13	815990.....	17	PAN1441000.....	27
676990.....	13	815990F.....	17	PAN1441002.....	27
676996.....	13	815990Y.....	17	PAN1442000.....	27
677990.....	13	815990YF.....	17	PAN1442002.....	27
678990.....	13	817980.....	32	PSC1455000.....	26
692990.....	14	821990Y.....	17	PSC1455002.....	26
790980.....	29	822990Y.....	17	PSC1456000.....	26
790982.....	29	822990.....	17	PSC1456002.....	26
791980.....	29	825990.....	17	PSC1457000.....	26
791982.....	29	825990Y.....	17	PSC1457002.....	26
7924160.....	29	82936.....	35	PSC1458000.....	26
7924162.....	29	830990.....	18	PSC1458002.....	26
7924240.....	29	835990.....	18	PSC1460000.....	26
7924242.....	29	896260.....	30	PSC1460002.....	26
792980.....	29	896262.....	30	PSN1451000.....	28
792982.....	29	CJB635990.....	4	PSN1451002.....	28
7930240.....	29	CJB636990.....	4	PSN1452000.....	28
7930242.....	29	CJB637990.....	4	PSN1452002.....	28
7936140.....	29	CJB638990.....	4		
7936142.....	29	CTB1000.....	5		

CRESCENT JOBBOX[®]



Maximum Security. Our toughest onsite storage ever.

Crescent JOBBOX[®] Piano Boxes and Chests have been redesigned to deliver even greater security and durability with new storage capabilities for maximum organization. With extra-strength chamfered lids, high-capacity shelving, and many other innovative features, they offer the safety, security, and durability Crescent JOBBOX[®] products are known for.

 CRESCENT  **Wiss**  **Lufkin**  **NICHOLSON**  **H.K. PORTER**  **JOBBOX**  **APEX**

© 2020 Apex Tool Group, LLC ATG-6414



Trusted by the Trades.

See the full lineup:
www.crescenttool.com

